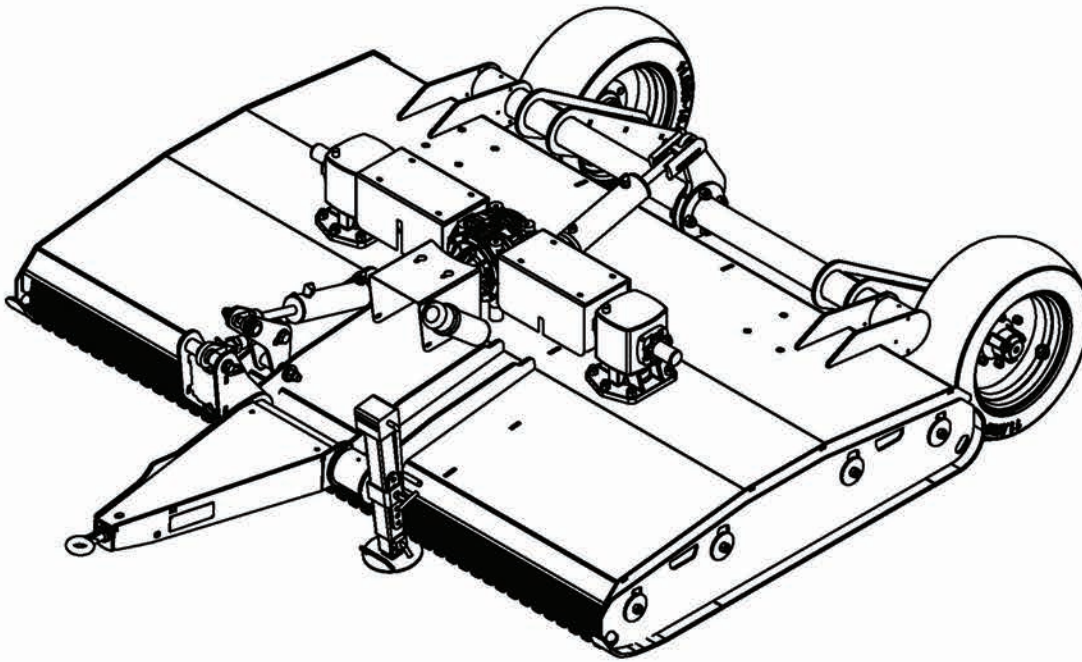


Trailed VHD Mower



The Trailed VHD Series

PARTS MANUAL

Including Common Parts & Optional Equipment

Covering the
10' & 12' Models
GPN 233000

COPYRIGHT

Neither this manual or part thereof may be reproduced or published
without the permission of AF Gason Pty Ltd



AF GASON

Contents

<u>Ordering Parts</u>	<u>3</u>
------------------------------	-----------------

<u>Bolt Torques</u>	<u>5</u>
----------------------------	-----------------

<u>Machine Info</u>	<u>5</u>
----------------------------	-----------------

Blade Set-up	6
--------------	---

Decals (Trailed)	7
------------------	---

Gearbox - Cutterhead	8
----------------------	---

Gearbox - Tee	9
---------------	---

Input PTO Shaft	10
-----------------	----

Guarding	12
----------	----

Hydraulic Layout	13
------------------	----

10' Driveline	14
---------------	----

12' Driveline	16
---------------	----

Axle	17
------	----

General Assembly	18
------------------	----

Ordering Parts

The following information must be supplied to your local dealer to facilitate fast and accurate processing of a replacement parts order:-

- Gason Part Number (GPN) and description (as given in this manual)
- Quantity Required
- Machine Model & Serial Number

For your convenience, record the following information below.

Dealer Name: _____

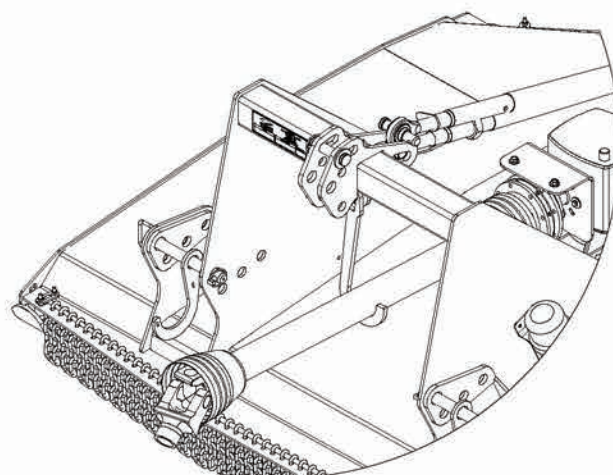
Dealer Address: _____

Dealer Phone Number: _____

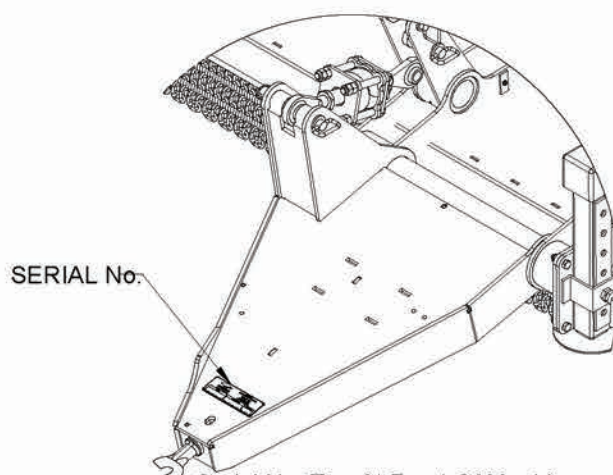
Machine Model No: _____

Date of Purchase: _____

Serial Number: _____



Serial No. Tag At Right Front Of Machine



Serial No. Tag At Front Of Machine

Subject to any applicable Federal, State or Territory laws or ordinances, which may apply from time to time, AF Gason Pty Ltd reserves the right to make changes in design and specifications without notice or obligation and to change or discontinue models at any time without incurring any liability to any Purchaser thereof.

Left and right hand: All references in this manual are determined by facing the direction of travel.

For warranty provisions please consult your Installation and Warranty Registration document.

While every effort has been made to ensure the accuracy of the information in this manual, AF Gason Pty Ltd reserves the right to delete, change or add information without notice.

Page Intentionally Blank

Bolt Torques

As part of our service to the end consumer Gason make every effort to ensure all bolts and nuts are torqued using specific procedures during the assembly process.

Throughout this parts manual the following symbols may be seen which indicate important settings critical to the continued safe operation of your mower/slasher.







: Critical Torque Setting (N m)



: Always Replace after disassembly

Where a Torque is not specified on a nut or bolt it should be assumed that it is torqued according to the following tables.

Size		Thread Pitch	Recommended Assembly Torque						
			lbf.ft		Nm		lbf.ft		Nm
S.A.E Grade Number		5		8		Wheel Stud			
Head Markings (Manufacturers marks may vary)									
7/16	UNF	43	59	60	82	-	-	-	-
7/16	UNC	39	53	54	74	-	-	-	-
1/2	UNF	67	91	94	128	-	-	-	-
1/2	UNC	59	81	83	113	-	-	-	-
5/8	UNF	135	184	186	253	-	-	-	-
5/8	UNC	117	159	165	224	-	-	-	-
3/4	UNF	235	319	325	441	-	-	-	-
3/4	UNC	210	285	290	394	-	-	-	-
7/8	UNF	370	502	520	706	-	-	-	-
7/8	UNC	335	455	470	638	-	-	-	-
1	UNF	550	746	775	1052	-	-	-	-
1	UNC	505	685	710	963	-	-	-	-

Metric Grade Number		8.8		10.9		Wheel Stud	
Head Markings (Manufacturers marks may vary)							
M10	1.5	29	40	41	56	-	-
M12	1.75	51	70	73	100	-	-
M16	-	-	-	-	-	170	231
M16	2.0	126	171	180	245	-	-
M18	1.5	-	-	-	-	254	345
M20	1.5	-	-	-	-	376	510
M20	2.5	247	335	351	477	-	-
M22	1.5	-	-	-	-	475	645
M24	-	-	-	-	-	500	679
M24	3.0	425	577	608	825	-	-

NOTE

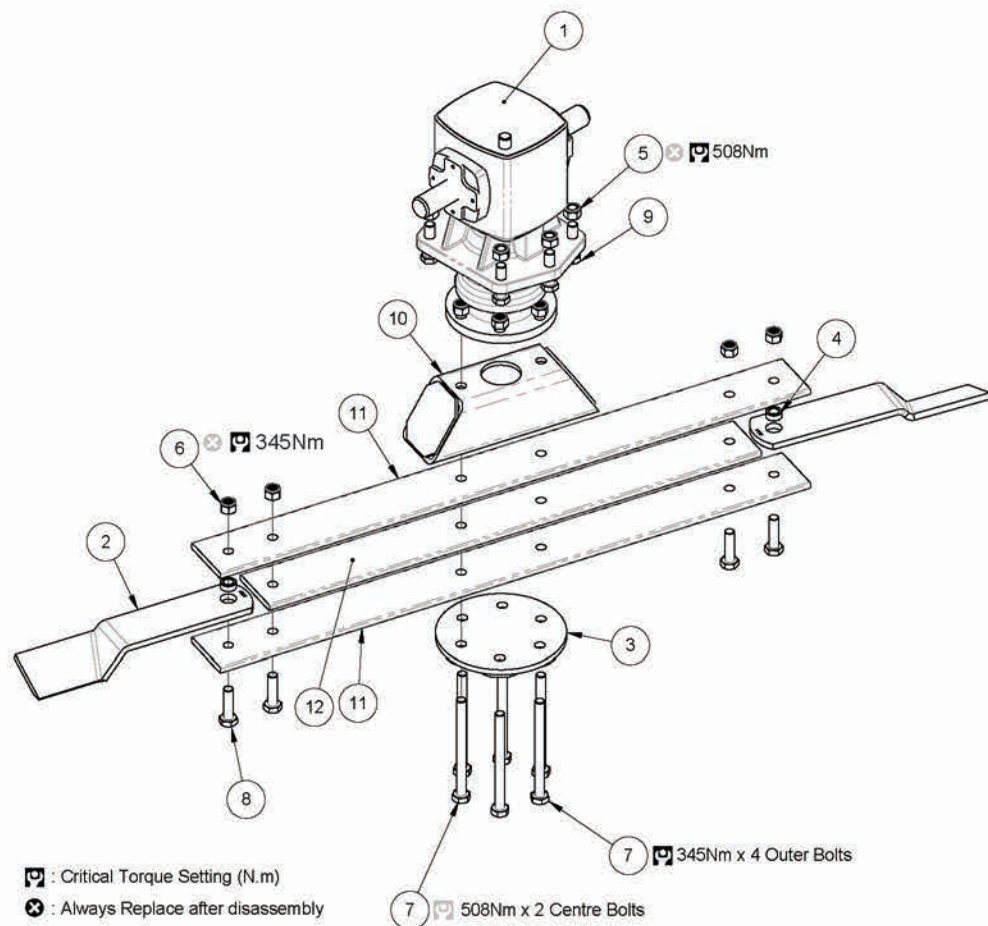
The above figures are based on zinc plated, lightly oiled hardware.

Recommended assembly torques for alternative finish or application, may be obtained by multiplying the torque figures in the table by:

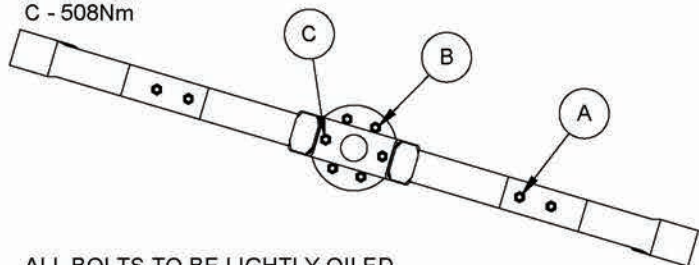
0.78 – for degreased zinc plated bolts.

1.10 – for black oxide finished bolts.

Blade Set-up



A - 345Nm
 B - 345 Nm
 C - 508Nm



Blade Bolt Kit - GPN: 225718

Includes:

- 230591: Bush - Blade 3/4" ID x 13mm
- 903803: Nut Nyloc 3/4" UNF Gr 8
- 912818: Bolt 3/4 UNF x 2-3/4" HT

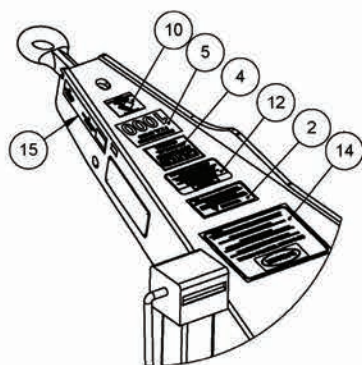
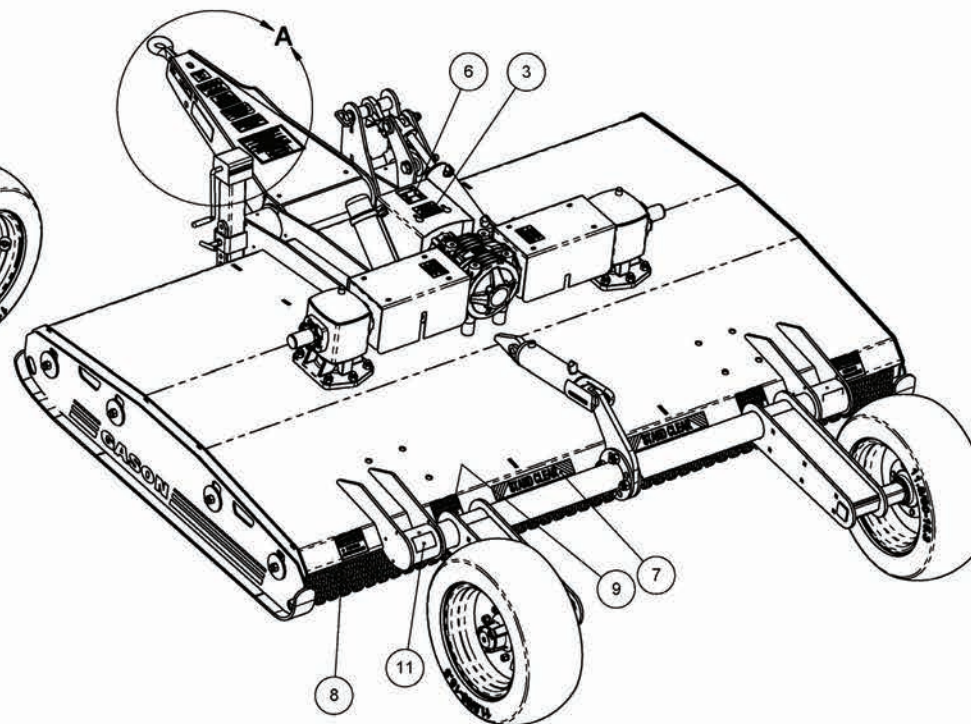
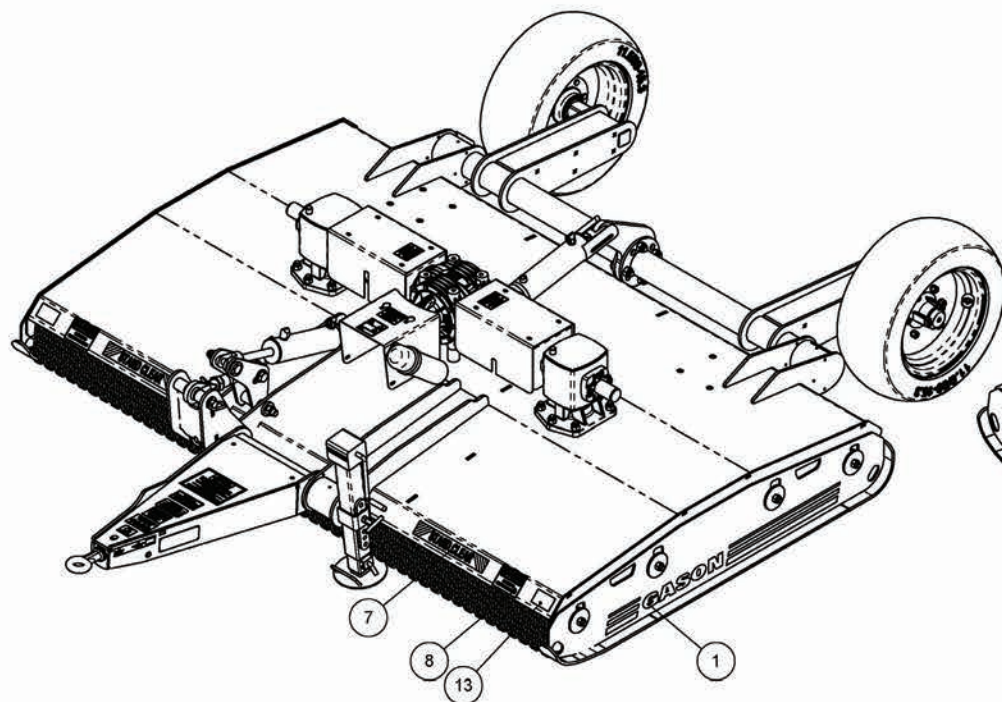
Note: Quantities shown are per cutterhead.

Item	GPN	Description	Qty.	
			10'	12'
1	223533	Gear Box - Cutterhead 1:1	1	1
2	223543	Blade - 450mm ACW	2	2
	223542	Blade - 450mm CW	Ref	Ref
3	223564	Clamp - Rotor	1	1
4	230591	Bush - Blade 3/4" ID x 13mm	2	2
5	903933	Nut Nyloc M20 CL10	6	6
6	903803	Nut Nyloc 3/4" UNF GR.8	10	10
7	912853	Bolt 3/4" x 9" UNF	6	6
8	912818	Bolt 3/4" UNF x 2- 3/4" GR.8	4	4
9	913808	Bolt M20 x 75 GR10.9 ZP	6	6
10	228729	Spacer - 125mm Block	1	1
11	227019	Rotor Bar - 930	-	2
	227017	Rotor Bar - 600	2	-
12	227020	Rotor Bar Spacer - 930	-	1
	227018	Rotor Bar Spacer - 600	1	-

ALL BOLTS TO BE LIGHTLY OILED.

ENSURE BLADES ROTATE FREELY AFTER TORQUING BOLTS.

Decals (Trailed)



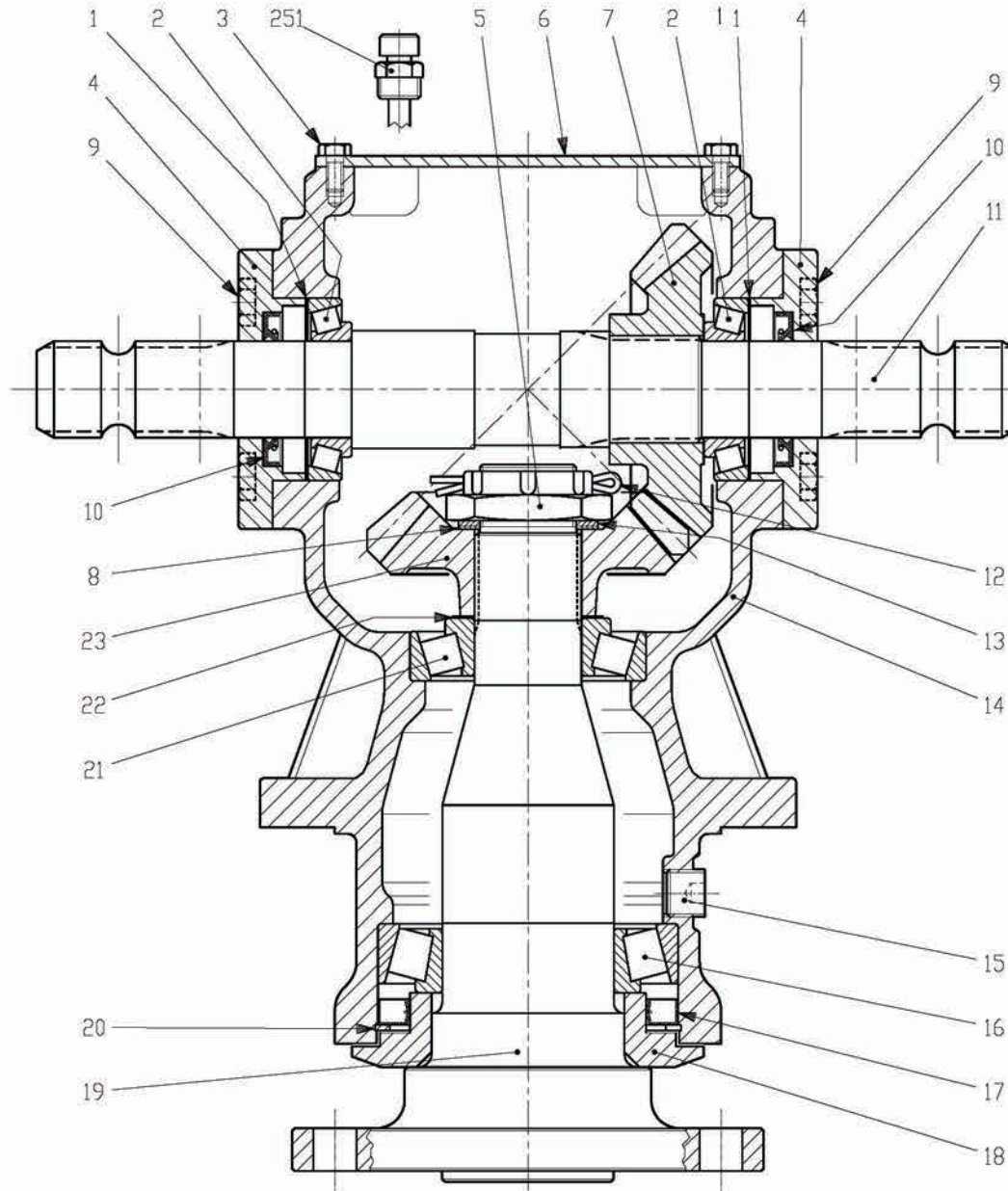
Item	GPN	Description
1	207246	Gason Decal
2	216072	Decal - Do Not Ride
3	224323	Decal - Caution Guard
4	224328	Decal - Caution Stop
5	224318	Decal - 1000RPM
6	224327	Decal - PTO Rotating
7	224322	Decal - Stand Clear
8	224320	Decal -Warning Blade

Qty.	Item	GPN	Description	Qty.
2	9	224321	Decal - Warning Debris	2
1	10	207998	Decal - TMA	1
3	11	205830	Tape Red Reflective - 60 x100mm	2
1	12	206955	Decal Warning -Safety	1
1	13	206694	Tape White Reflective - 60 x100mm	2
1	14	228234	Decal - Danger Notice	1
4	15	804465	Decal Gason- An Australian	1

Gearbox - Cutterhead

GPN: 223533 - 1000 RPM 1:1 Ratio

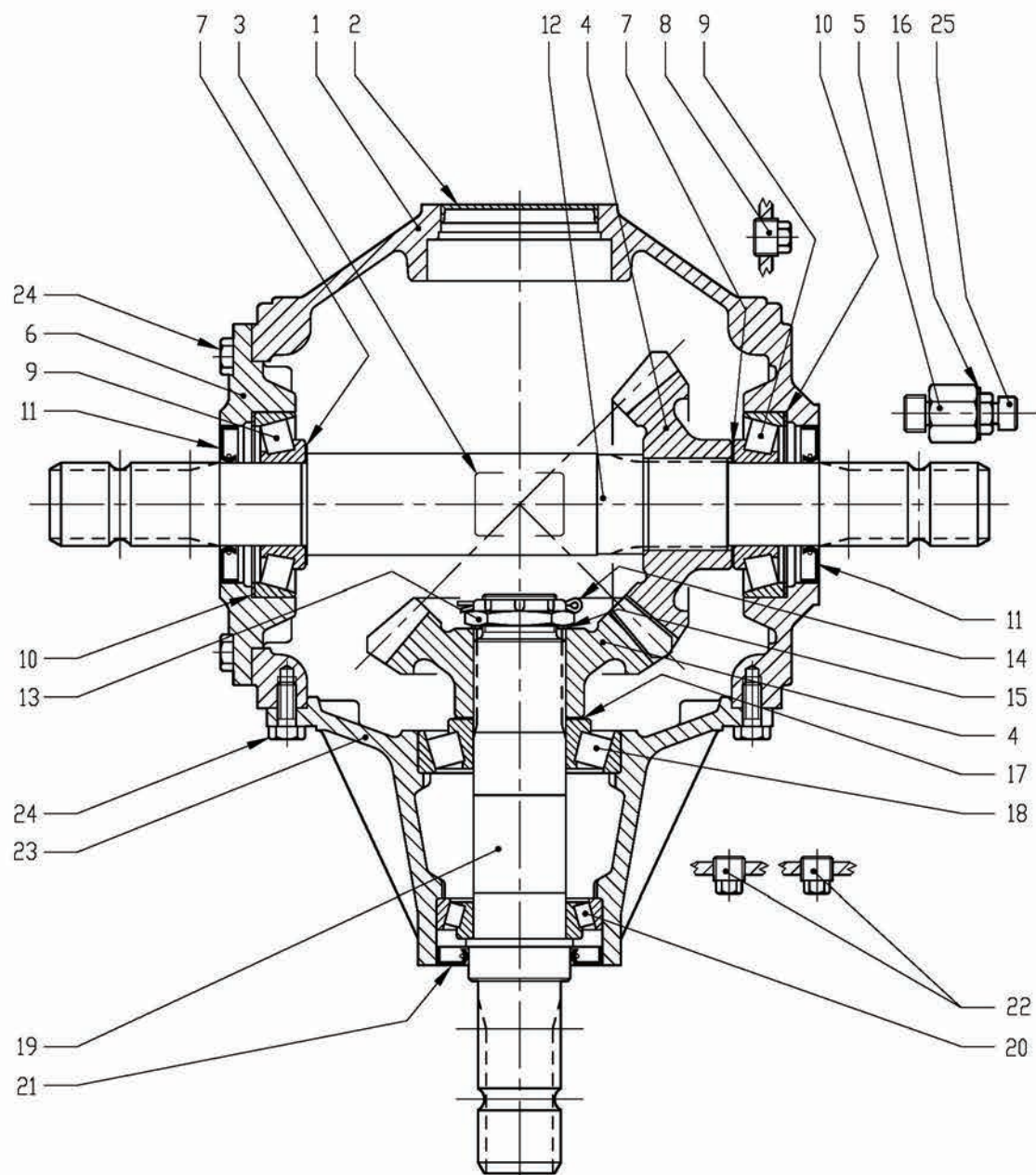
GPN: 224421 - 540 RPM 1:1.42 Ratio



Item	GPN	Description	Qty
1	226405	Shim 84.7	2
2	207969	Bearing 30209	2
3	N/A	Bolt M8x18, 8.8	6
4	226406	Cover, Input Shaft	2
5	226408	Nut M4 5X1.5	1
6	226407	Cover, Top	1
7	225699	Crown Wheel Z21 M7.14	1
	225703	Crown Wheel Z27 M6.3	-
8	226409	Shim Pinion 45.3x1.0	1
9	917601	Bolt M12x25, 10.9	8
10	226410	Double Lip Seal 45x72x8	2
11	225701	Shaft Input	1
12	226413	Cotter Pin B6x80	1
13	226414	Shim 45.3x2.5	1
14	226415	Casing T1	1
15	N/A	Plug 1/2" GAS	1
16	220413	Bearing 32216	1
17	226416	Oil Seal 110x140x12	1
18	226417	Bush	1
19	226418	Shaft Rotor	1
20	226419	Snap Ring BR140	1
21	226420	Bearing 30310	1
22	226421	Shim 70.3	1
23	225700	Gear Pinion Z21 M7.14	1
	225704	Gear Pinion Z19 M6.3	-
251	225504	Plug 1/2" GAS Breather	1

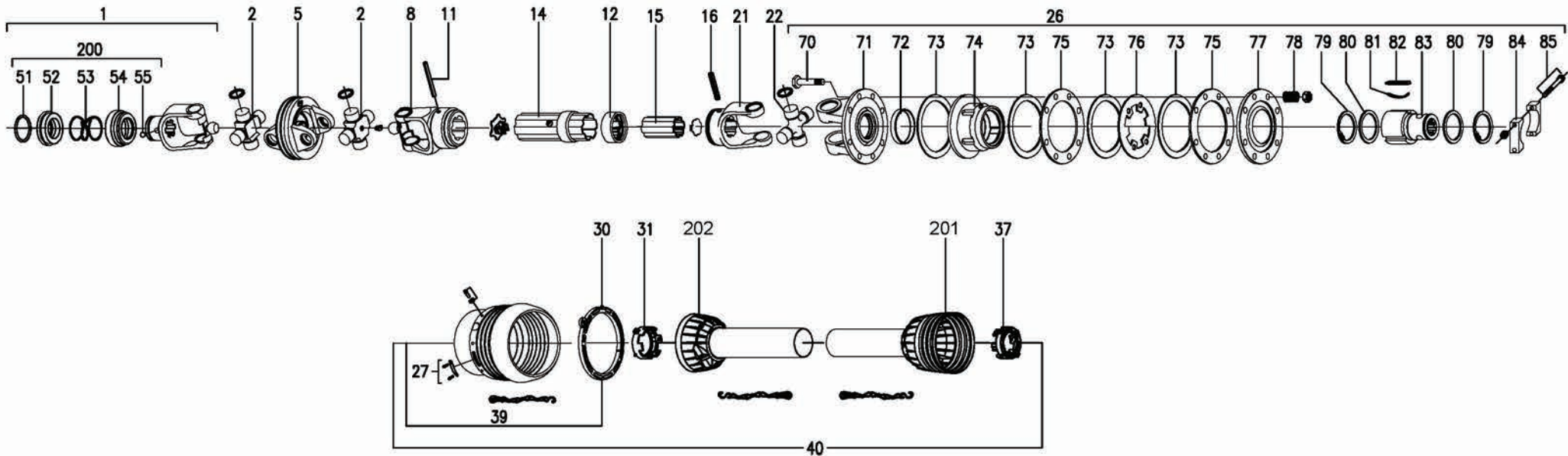
Gearbox - Tee

GPN: 224197



Item	GPN	Description	Qty.
1	N/A	Casing	1
2	N/A	Cap 85x10	1
3	N/A	Plate	1
4	226461	Gear Z20 M7.8	2
5	N/A	Oil Plug Extension 1/2"GAS	1
6	N/A	Cover	1
7	226442	Shim 45.3x65.3	2
8	N/A	Plug 1/2"GAS	1
9	226465	Bearing 30309	2
10	226443	Shim 99.7	2
11	226447	Oil Seal 45x85x10	2
12	226444	Shaft 20-1 3/4 Z20	1
13	226463	Nut M40x1.5	1
14	N/A	Cotter Pin	1
15	226445	Shim 61.7x1	1
16	226448	Copper Washer 21, 46x28x1	1
17	226421	Shim 70.3	1
18	226420	Bearing 30310	1
19	226446	Shaft 1 3/4 Z20	1
20	215306	Bearing 30210	1
21	226449	Oil Seal 55x90x10	1
22	N/A	Plug 3/8"GAS	2
23	N/A	Extension	1
24	917403	Bolt M10x25, 8.8	18
25	226450	Oil Filter Plug 1/2"GAS	1

Input Shaft

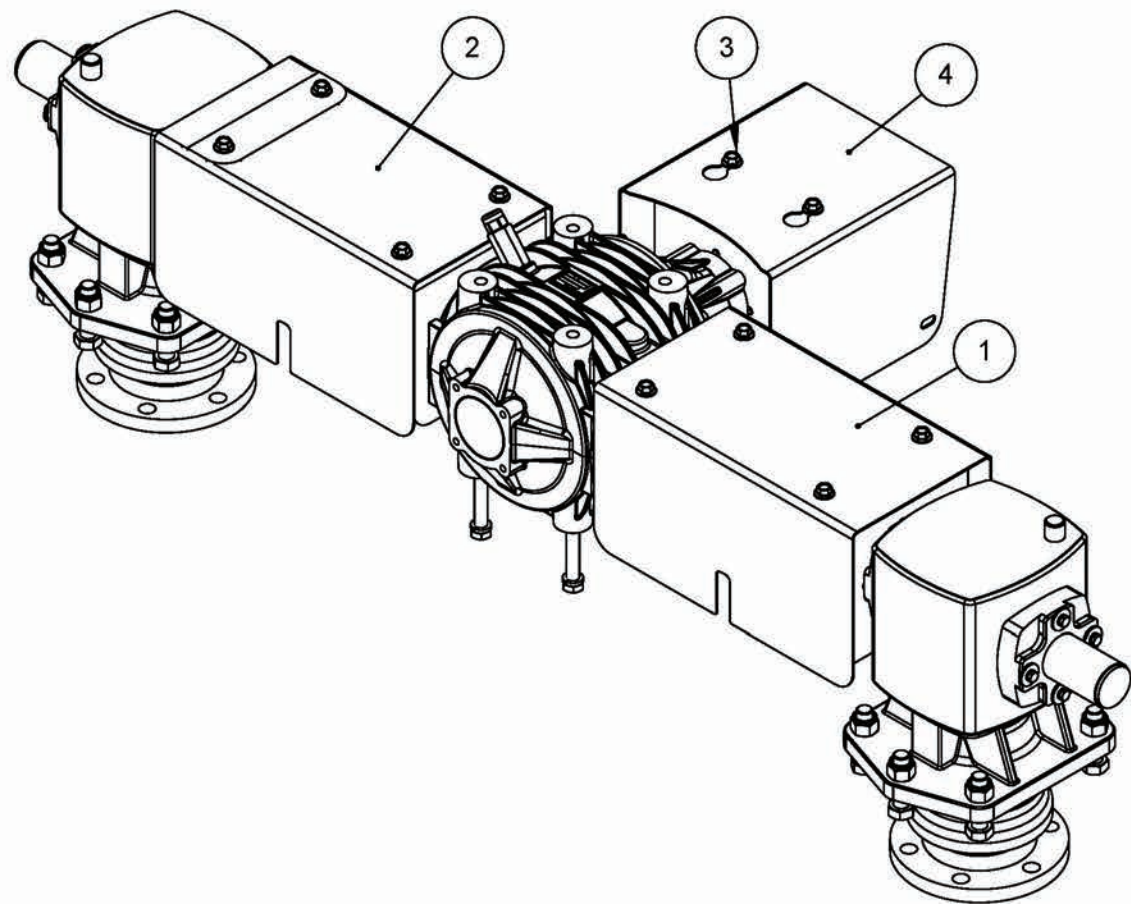


Input Shaft

GPN: 224247

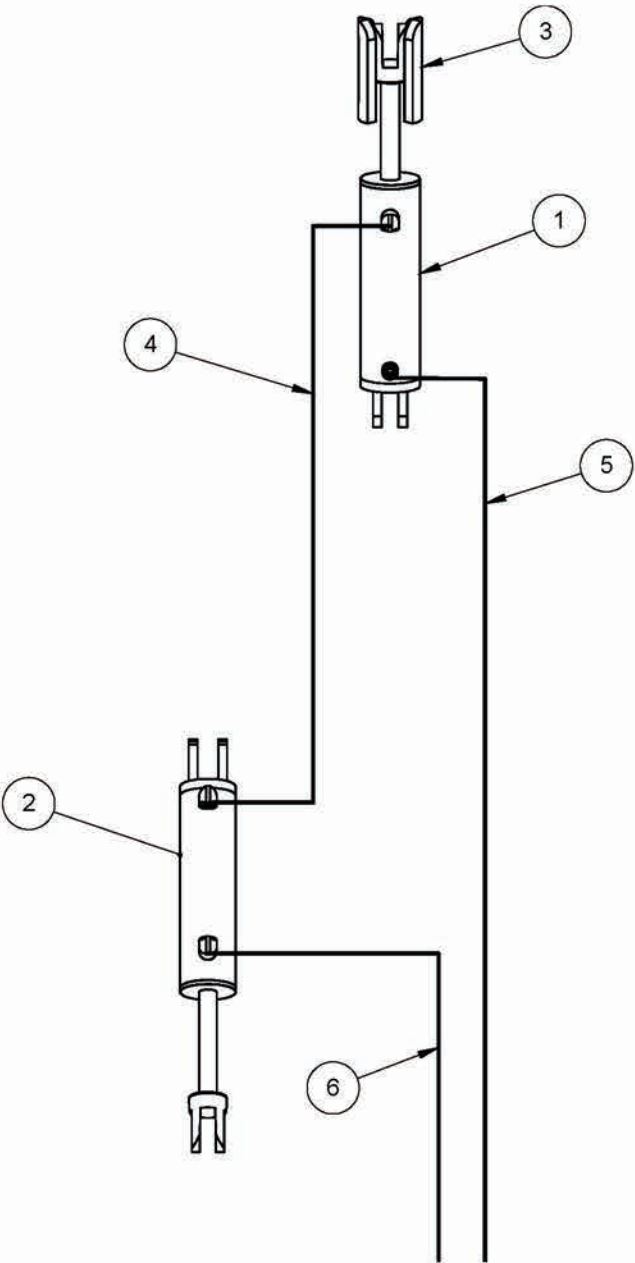
Item	GPN	Description	Qty.	Item	GPN	Description	Qty.
1	224946	Complete Collar Yoke for CV-Joint	1	55	226324	Ball 1/2"	3
2	226273	Cross Journal Set for CV-Joint	2	70	913416	Bolt M10x100	8
5	226294	Wide Angle Yoke	1		904402	Nut Nyloc M10	8
8	226275	Outer Yoke	1	71	226308	Flanged Yoke	1
11	226272	Roll Pin	1	72	226309	Bush	1
12	226266	Wiper	1	73	226310	Lining Ring	4
14	226389	Complete Outer Tube Rislan 3m	1	74	226311	Body RF with Grease Nipple	1
15	226390	Inner Tube Rislan 3m	1	75	226312	Inner Plate	2
16	226268	Roll Pin	1	76	226313	Intermediate Plate	1
21	226265	Inner Yoke	1	77	226314	Pressure Plate	1
22	224992	Cross Journal Set	1	78	226290	Spring	8
26	226306	Complete RF9 (1400Nm)	1	79	226303	Inner Circlip	2
27	226296	Set Sheet & Screw	1	80	226302	Retaining Washer	2
30	226298	Bearing Ring	1	81	226300	Carriage Spring	3
31	226291	Guard Retaining Collar for Outer Tube	1	82	226301	Tang	3
37	226292	Guard Retaining Collar for Inner Tube	1	83	226315	Hub R15 (1 3/4" Z20)	1
39	226297	Guard Cone Set	1	84	226304	Bridge	2
40	226307	Complete Guard with Manual	1	85	913648	Bolt M14x100 1.5	2
51	226320	Circlip	1		904602	Nut Nyloc M14	2
52	226321	Sliding Sleeve Collar	1	200	226305	Kit Collar 1 3/8"	1
53	226322	Spring	1	201	226400	Guard Standard (Tube not Included)	1
54	226323	Fixed Sleeve	1	202	226401	Guard Short (Tube not Included)	1

Guarding



Item	GPN	Description	Qty.	
			10'	12'
1	224794	Panel - RH Cross Guard	1	-
	224864	Panel - Cross Guard	-	1
2	224793	Panel - LH Cross Guard	1	-
	224864	Panel - Cross Guard	-	1
3	917615	Screw Set M12 x 30 Purlin	10	10
4	224792	Panel - Input Guard	1	1

Hydraulic Layout

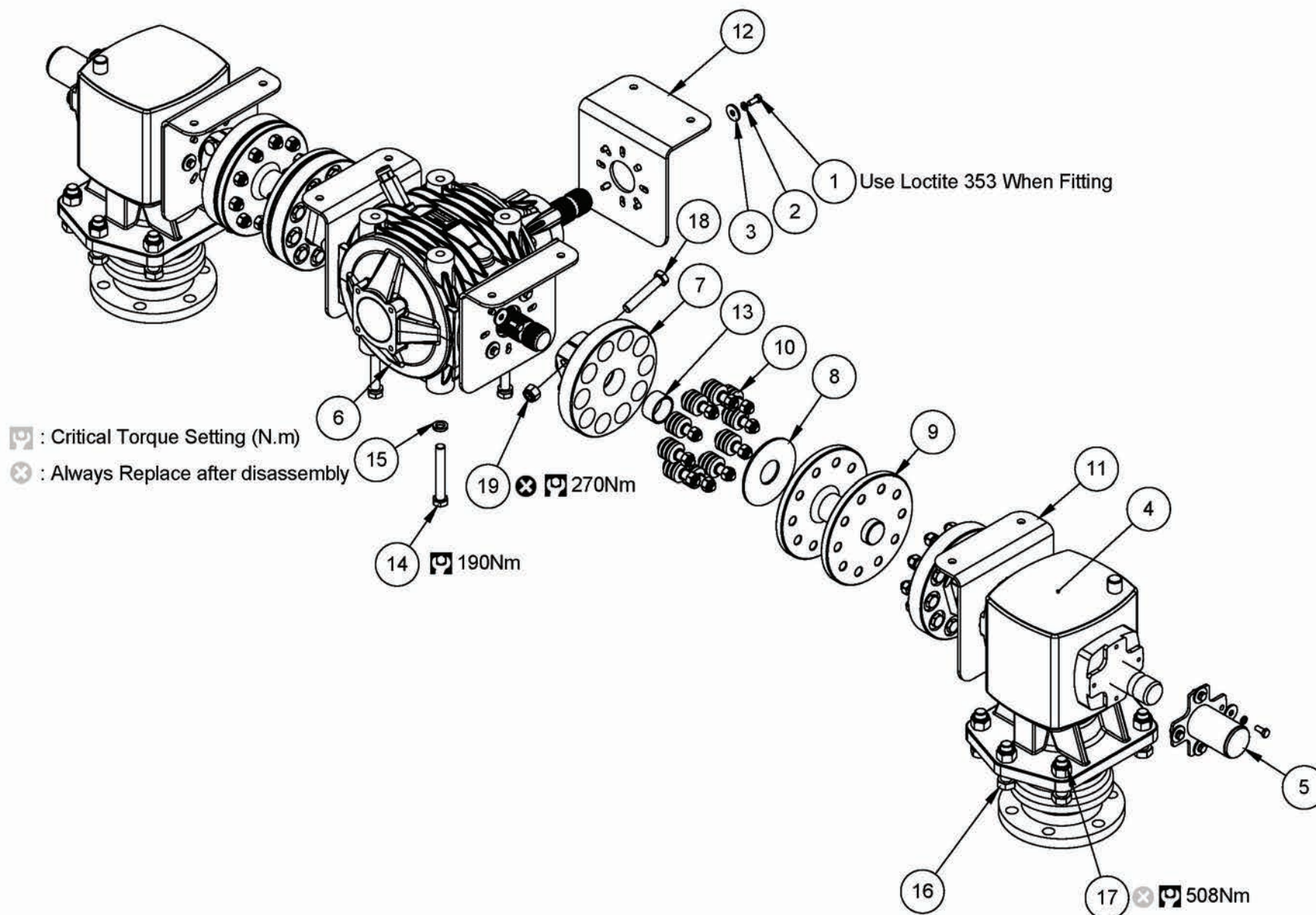


Item	GPN	Description	Qty.
1	223527	CYLINDER HYD 3.5" X 8"	1
2	223528	CYLINDER HYD 3.25" X 8"	1
3	229671	Depth Stop 200mm	1
4	225716	Hose Assy 3/8" SAE100R2 2000mm	1
5	225296	Hose Assy 3/8" SAE100R2 4700mm	1
6	225717	Hose Assy 3/8" SAE100R2 4100mm	1

Seal Kit Part Numbers

Cylinder GPN	Seal Kit GPN
223528	225943
223527	225944

10' Driveline

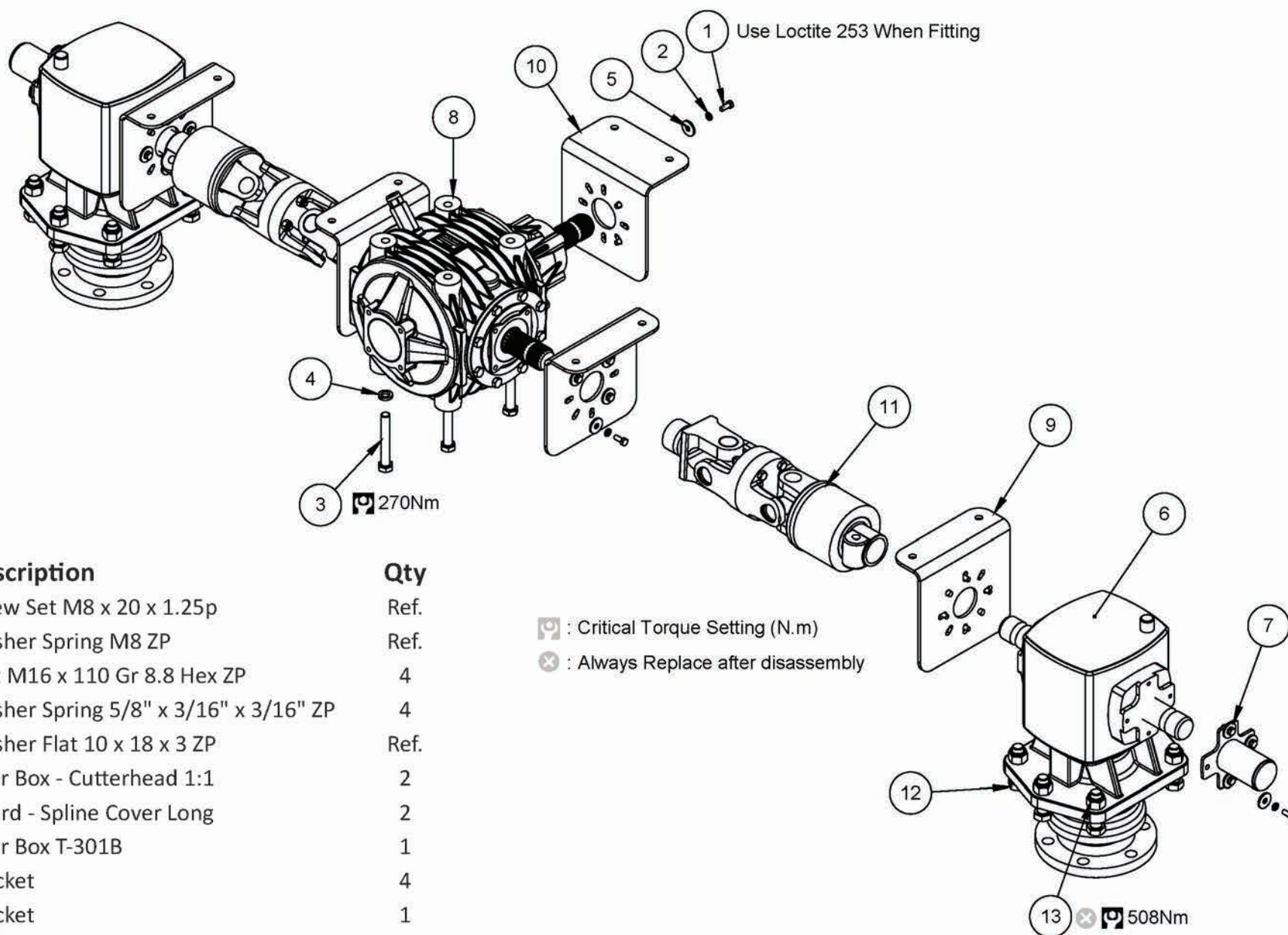


10' Driveline (Cont)

Item	GPN	Description	Qty
1	917308	Screw Set M8 x 20 x 1.25P	Ref.
2	909004	Washer Spring M8	Ref.
3	907413	Washer Flat 10 x 30 x 3 ZP	Ref.
4	223533	Gear Box - Cutterhead 1:1	2
5	223636	Guard - Spline Cover Long	2
6	224197	Gear Box T-301B	1
7	224277	Drive Plate	4
8	224274	Clutch Disc	4
9	228549	Drive Spacer - 127mm	2
10	224278	Drive Pin Assy - Cushioned	40
	225153	Rubber Cushion	Ref.

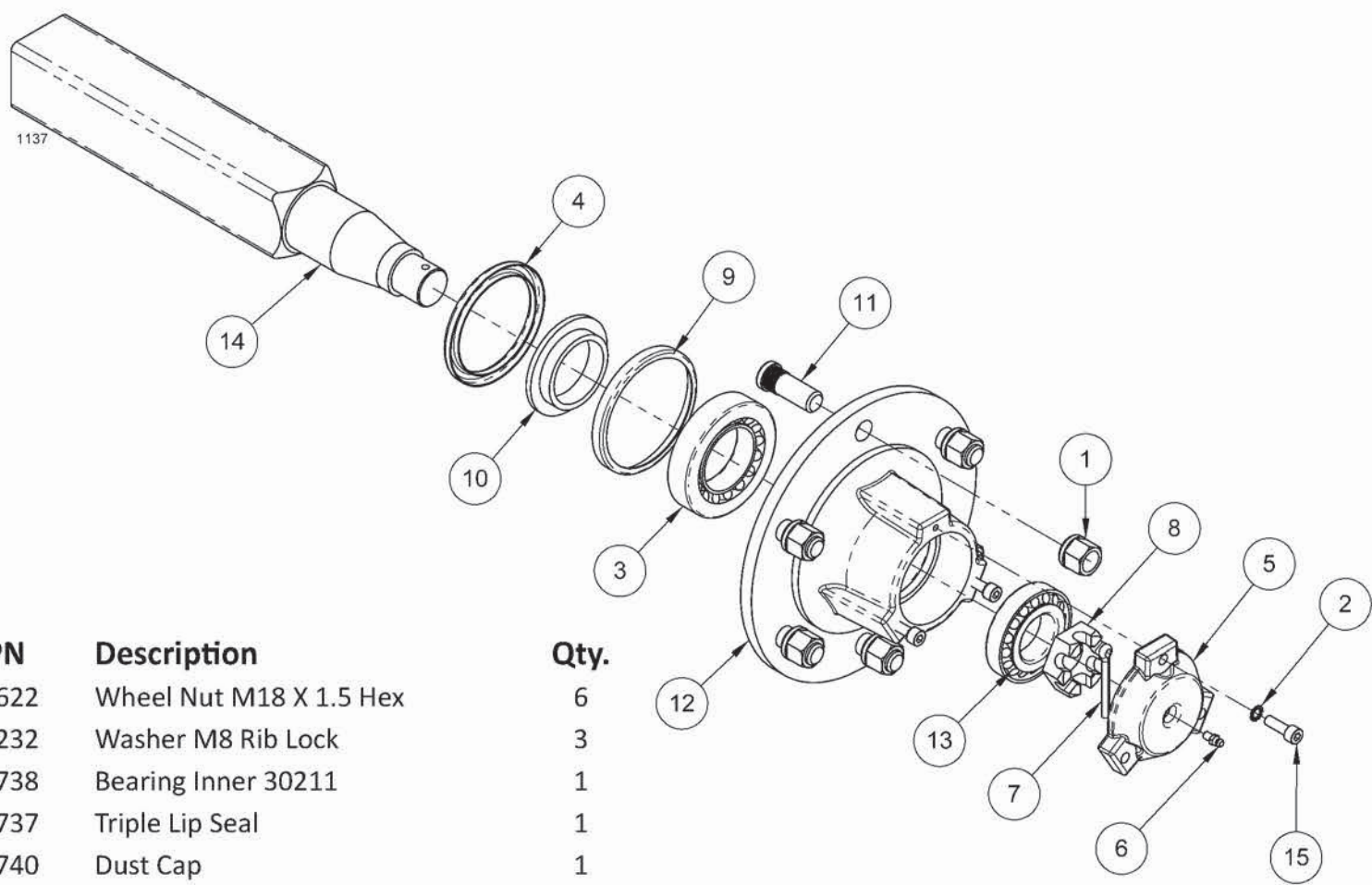
Item	GPN	Description	Qty
11	224796	Bracket	4
12	224795	Bracket	1
13	224797	Bush - Cast Bronze	4
14	913669	Bolt M16 x 110 Gr 8.8 Hex ZP	4
15	908702	Washer Spring 5/8" x 3/16" x 3/16" ZP	4
16	913808	Bolt M20 x 75 Hex Gr10.9 ZP	12
17	903933	Nut Nyloc M20 CL10	12
18	913729	Bolt M16 x 85 Gr10.9	8
19	904702	Nut Nyloc M16 CL10	8

12' Driveline



Item	GPN	Description	Qty
1	917308	Screw Set M8 x 20 x 1.25p	Ref.
2	909004	Washer Spring M8 ZP	Ref.
3	913669	Bolt M16 x 110 Gr 8.8 Hex ZP	4
4	908702	Washer Spring 5/8" x 3/16" x 3/16" ZP	4
5	907400	Washer Flat 10 x 18 x 3 ZP	Ref.
6	223533	Gear Box - Cutterhead 1:1	2
7	223636	Guard - Spline Cover Long	2
8	224197	Gear Box T-301B	1
9	224796	Bracket	4
10	224795	Bracket	1
11	225998	Shaft-PTO SF80 165mm Tor	2
12	913808	Bolt M20 x 75 Gr10.9 Hex ZP	12
13	903933	Nut Nyloc M20 CL10	12

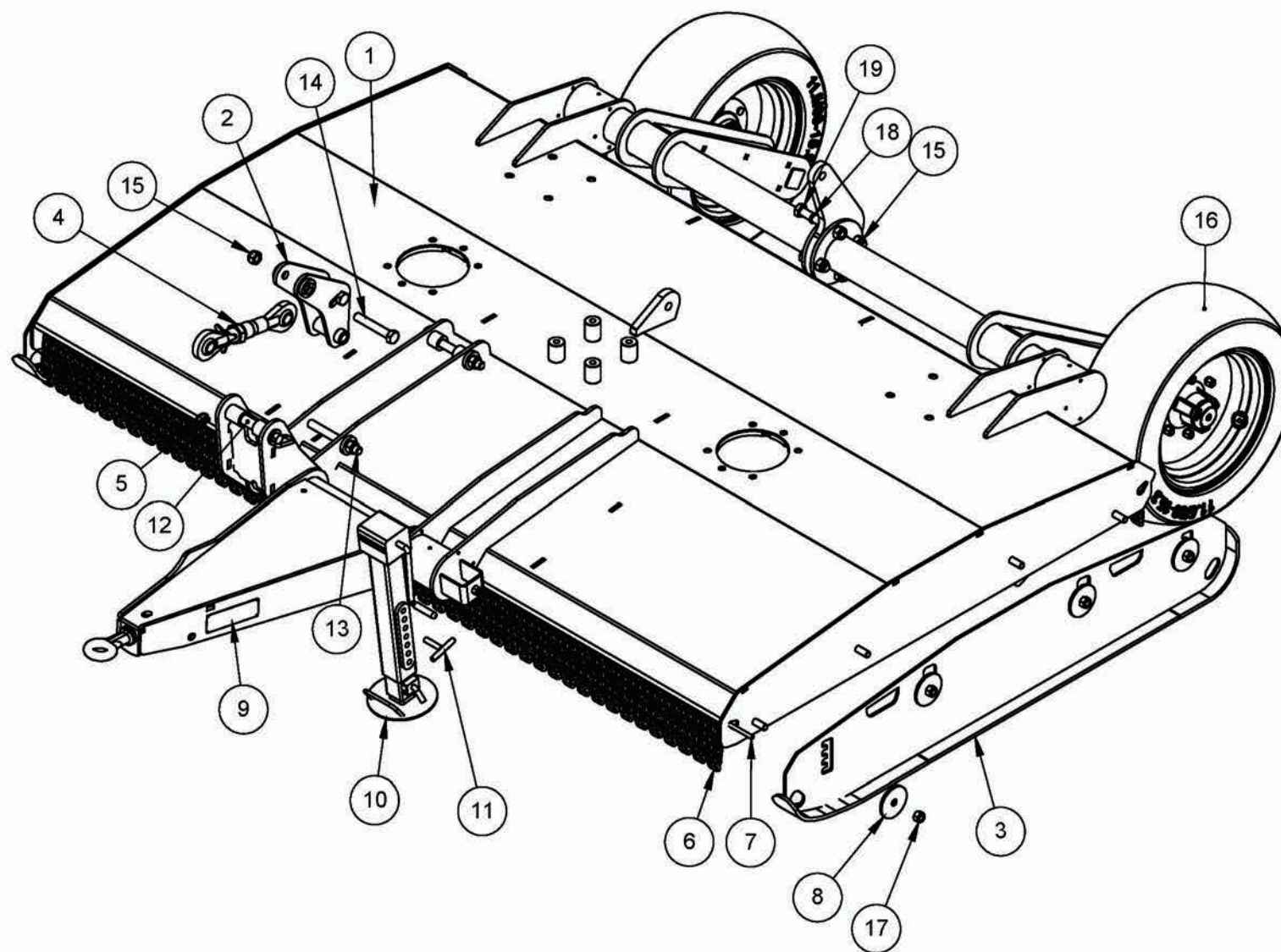
Axle
GPN: 220724



Item	GPN	Description	Qty.
1	204622	Wheel Nut M18 X 1.5 Hex	6
2	217232	Washer M8 Rib Lock	3
3	220738	Bearing Inner 30211	1
4	220737	Triple Lip Seal	1
5	220740	Dust Cap	1
6	220741	Nipple Grease 6mm	1
7	220742	Pin Split 6 x 50	1
8	220745	Nut Slotted M33x2	1
9	220746	Wear Ring	1
10	220747	Seal Ring	1
11	220748	Stud Wheel M18x1.5	6

Item	GPN	Description	Qty.
12	220749	Hub Machined	1
13	220739	Bearing Outer 30208	1
14	221039	Axle Stub Machined	1
15	220743	Screw Cap M8 x 25 S/HD	3
16	204678	Axle Assembly	REF.

General Assy



General Assy (Cont.)

Item	GPN	Description	Qty.		Item	GPN	Description	Qty.	
			10'	12'				10'	12'
1	226371	10ft VHD Weldment	1	-	12	223750	Pin Drawbar 1-1/4 x 8-1/4	1	1
	226370	12ft VDH Weldment	-	1	13	912913	Bolt 1" x 9"	2	2
2	223404	Bracket - Link	1	1	14	912908	Bolt 1" x 6"	2	2
3	224669	Skid Assy 10' VHD	2	-	15	903911	Nut Nyloc 1"	8	8
	224860	Skid Assy 12' VHD	-	2	16	224979	Wheel Assy 10/75-15.3	2	2
4	223536	Link Arm - Shortened	1	1	17	903931	Nut Nyloc M20	4	4
5	208695	Lynch Pin - Ø11 x 50mm	1	1	18	908905	Washer Spring 1"	4	4
6	223676	Chain 8mm 11 Links	Ref.	Ref.	19	912905	Bolt 1" x 3.5" UNC	4	4
7	224668	Chain Fastening Rod	2	2					
8	223720	Washer - Mower	4	4					
9	8001418	Tag Serial No	1	1					
10	222669	Welded 3T Jack	1	1					
11	222671	Handle Locking	1	1					