

# PARA-MAXX 150



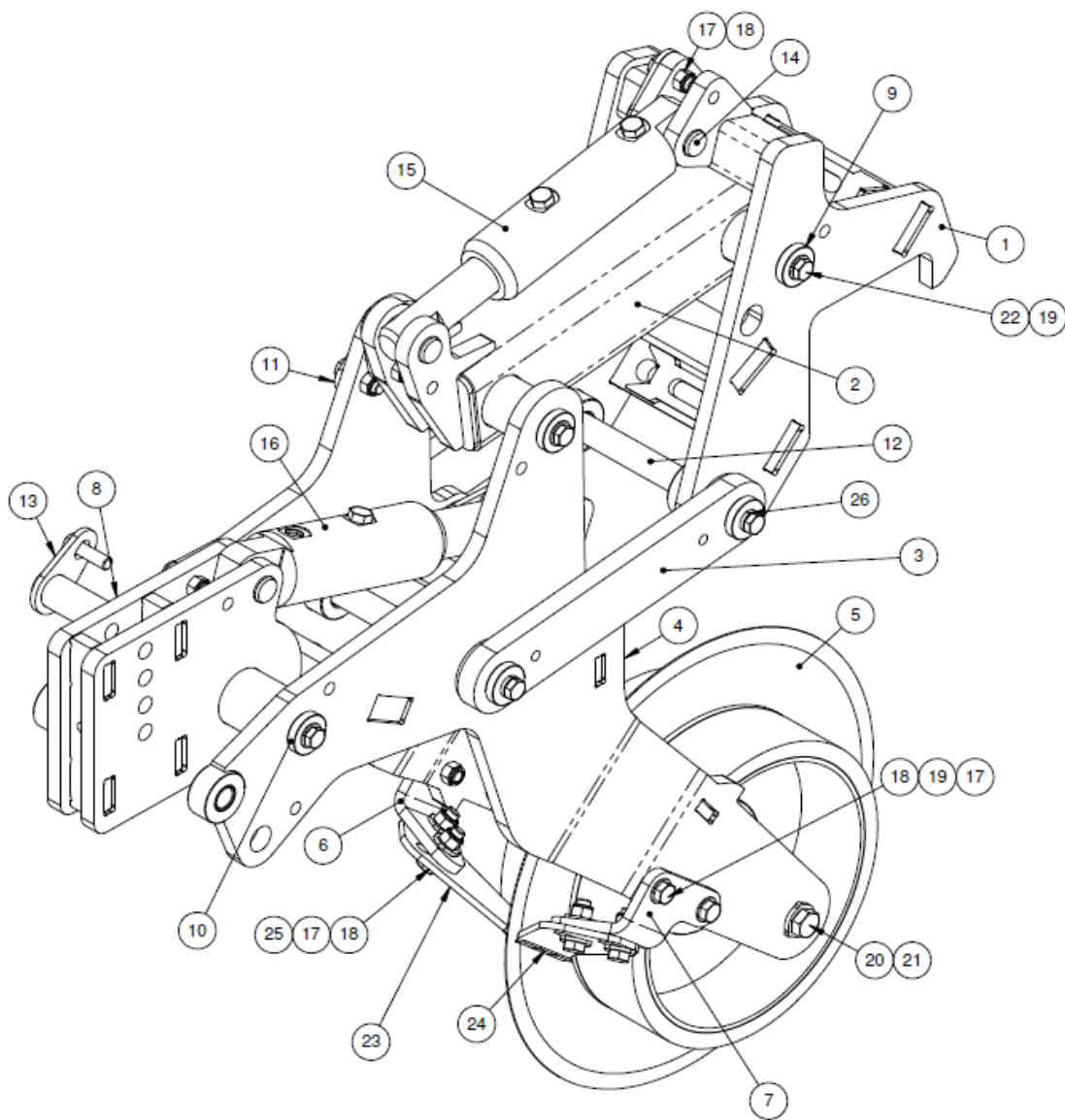
## PARTS MANUAL

GPN 222970

REVISION B

12/16

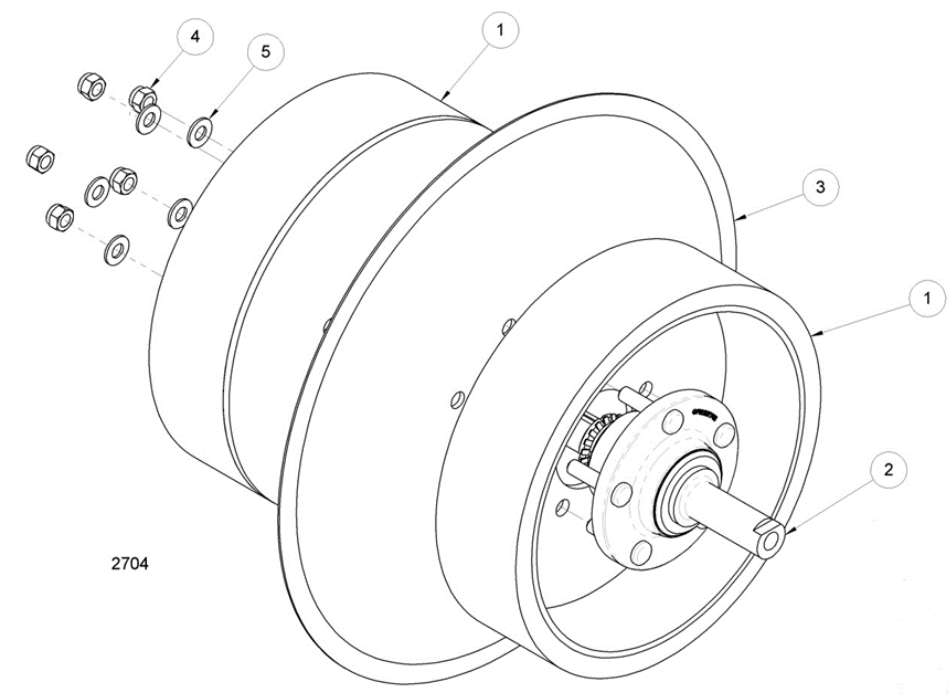
## ROW UNIT STOCKED (GPN222481)



ITEM	PART NUMBER	DESCRIPTION	QTY.
1	222485	Mount Upper Assembly Inc. Bushes	1
	222484	DU Bush 16DU24 for Item #1	2
2	222487	Arm Upper Assembly Inc. Bushes	1
	222484	DU Bush 16DU24 for Item #2	4
3	222491	Arm Lower	2
4	222493	Coulter Arm	1
	222484	DU Bush 16DU24 for Item #4	2
	222496	DU Bush 25DU22 for Item #4	2
5	222497	Coulter Assembly – Refer Page 3	1
6	222515	Scraper Mount LH	1
7	222516	Scraper Mount RH	1
8	222518	Tool Holder Assembly Inc. Bushes	1
	222521	DU Bush 20DU20 for Item #8	2
9	222535	Washer Recessed 1"	4
10	222536	Washer Recessed 1- 1/4"	1
11	222539	Pin 1" x 214mm	2
12	222543	Pin 1" x 264mm	2
13	222553	Pin 1"- 1/4" x 214mm	1
14	222557	Pin 1" x 63mm	4
15	222522	Cylinder Assy. 1- 1/2" Inc. Bushes	1
	223697	Seal Kit for 222522	-
	207186	DU Bush 1"x1" for Item #15	2
16	222528	Cylinder Assy. 1- 3/4" Inc. Bushes	1
	223698	Seal Kit for 222528	-
	207186	DU Bush 1"x1" for Item #16	2
17	904600	Nyloc Nut M12	15
18	913612	Bolt M12 x 40 1.75	15
19	907503	Washer Flat M12 x 24 x 1.6	16
20	917705	Set Screw M16 x 40	2
21	812588	Washer Structural M16	2
22	913608	Bolt M12 x 30	7
23	228177	Scraper Left Hand	1
24	228176	Scraper Right Hand	1
25	906602	Washer Structural 1/2"	8
26	908604	Spring Washer 1/2 x 5/32 x 5/32	2

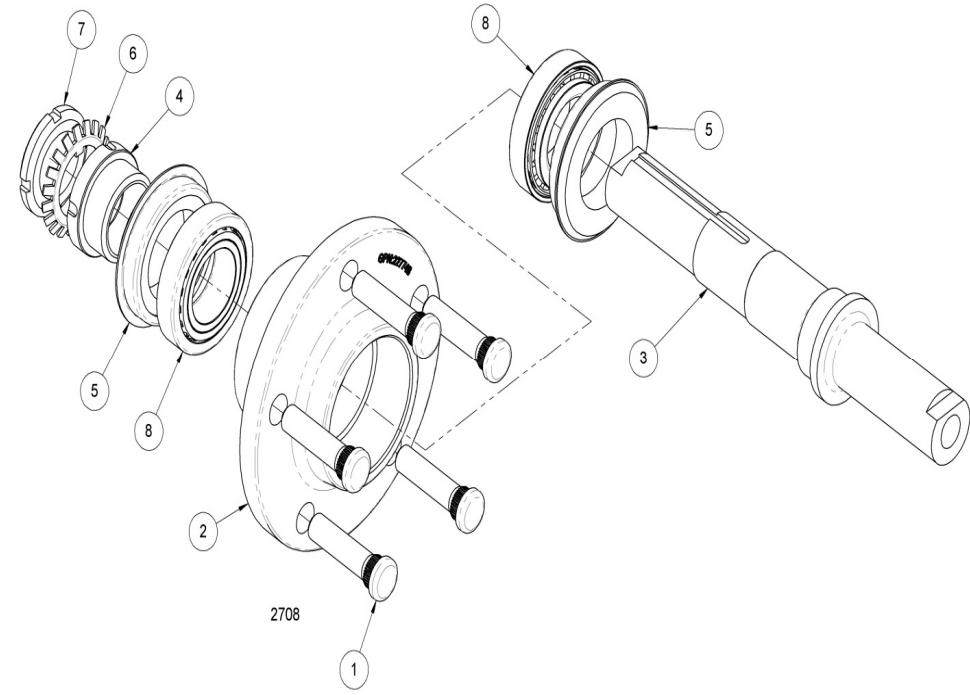


**COULTER ASSEMBLY (GPN222497)**



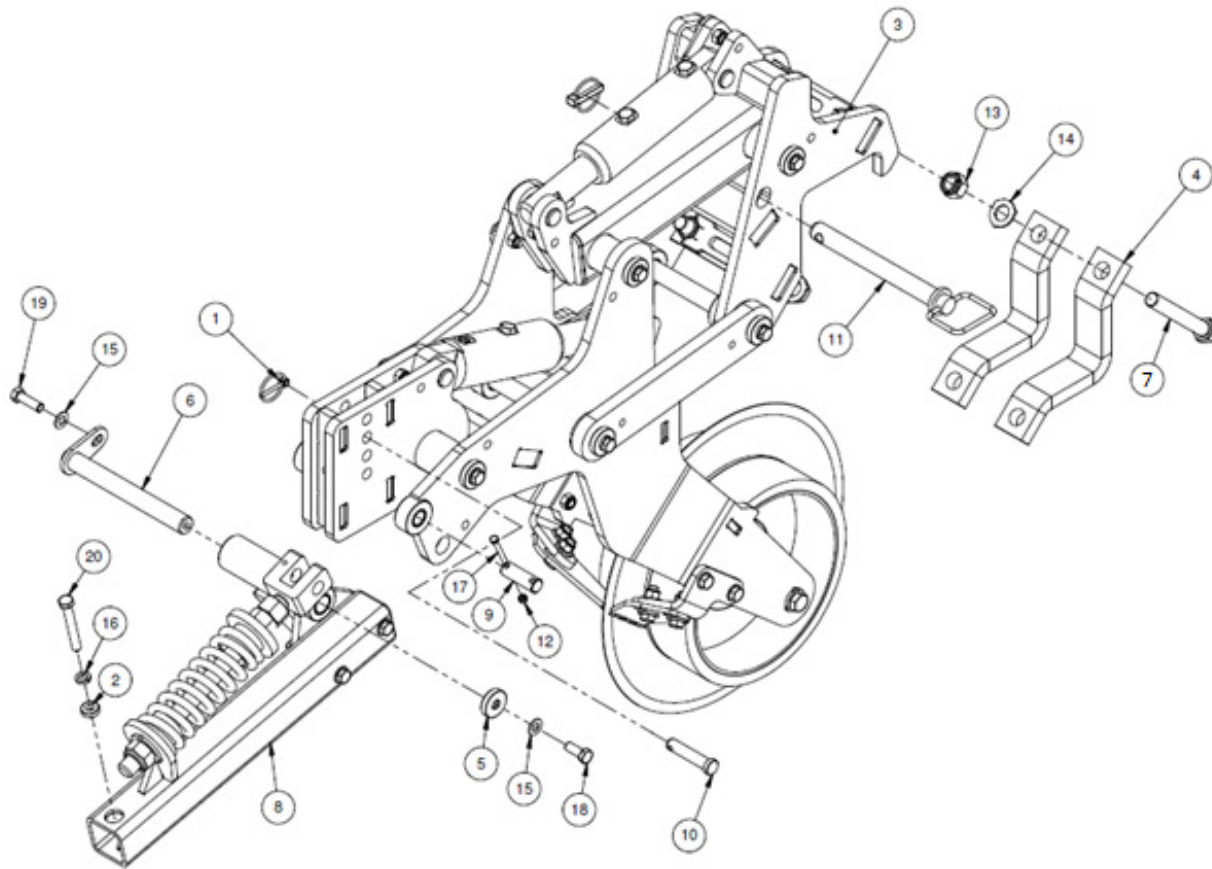
ITEM	GPN	DESCRIPTION	QTY.
1	222499	Coulter Drum	2
2	222502	Coulter Axle	1
3	222498	Coulter 18" x 4mm	1
4	226148	Nut Nyloc 7/16" UNF	5
5	906504	Washer Flat 7/16" x 22.5 x 2	5

**COULTER AXLE (GPN222502)**



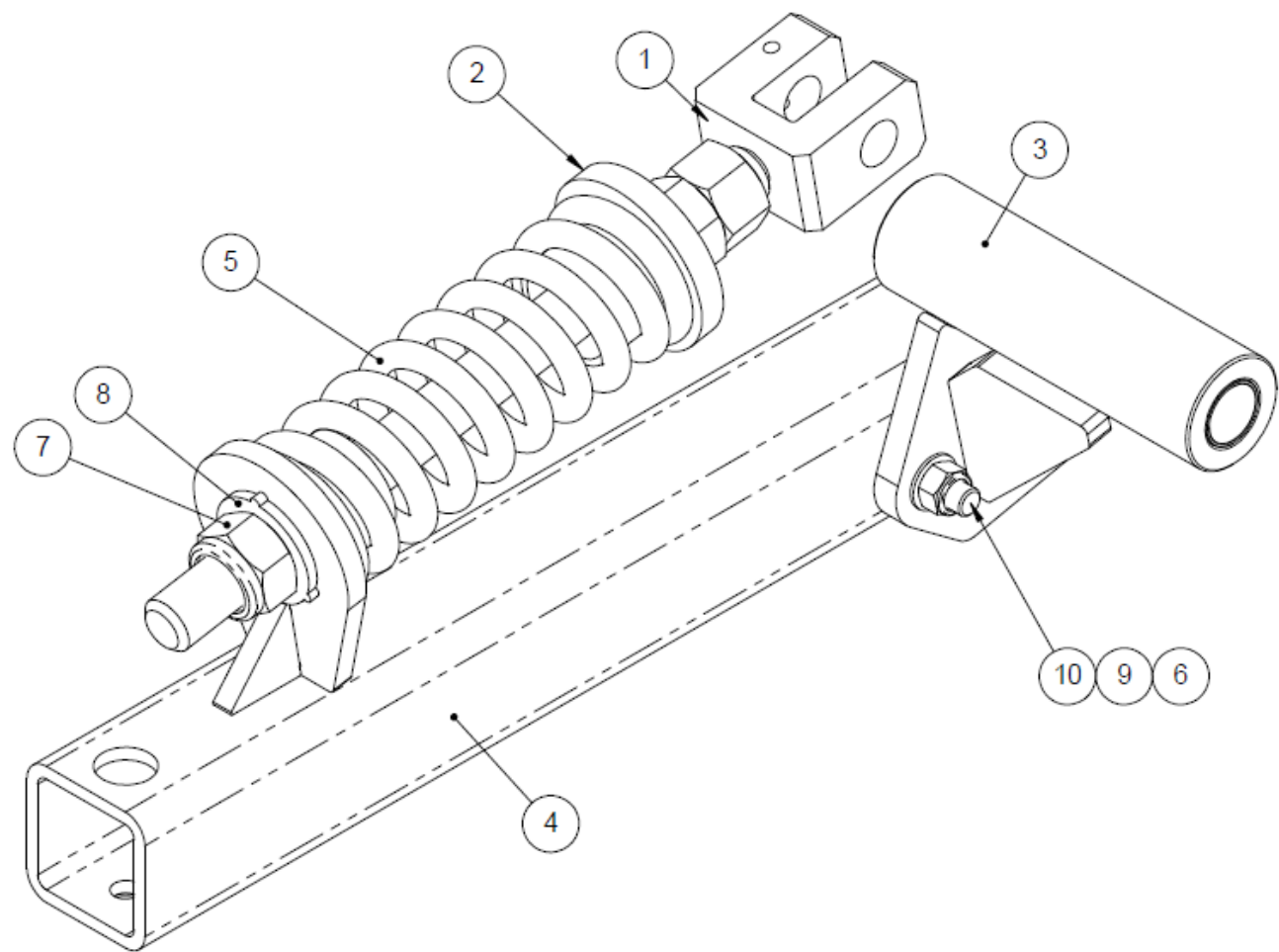
ITEM	GPN	DESCRIPTION	QTY.
1	226147	Stud Wheel 7/16 UNF	5
2	227748	Hub - Cast & Machined	1
3	222506	Axle	1
4	228046	Locking Spacer 30mm	1
5	222508	Seal Marine 1-1/2"	2
6	222510	Lock Washer M30	1
7	222511	Lock Ring M30	1
8	222512	Bearing Set	2

## TOOL CARRIER ASSEMBLY



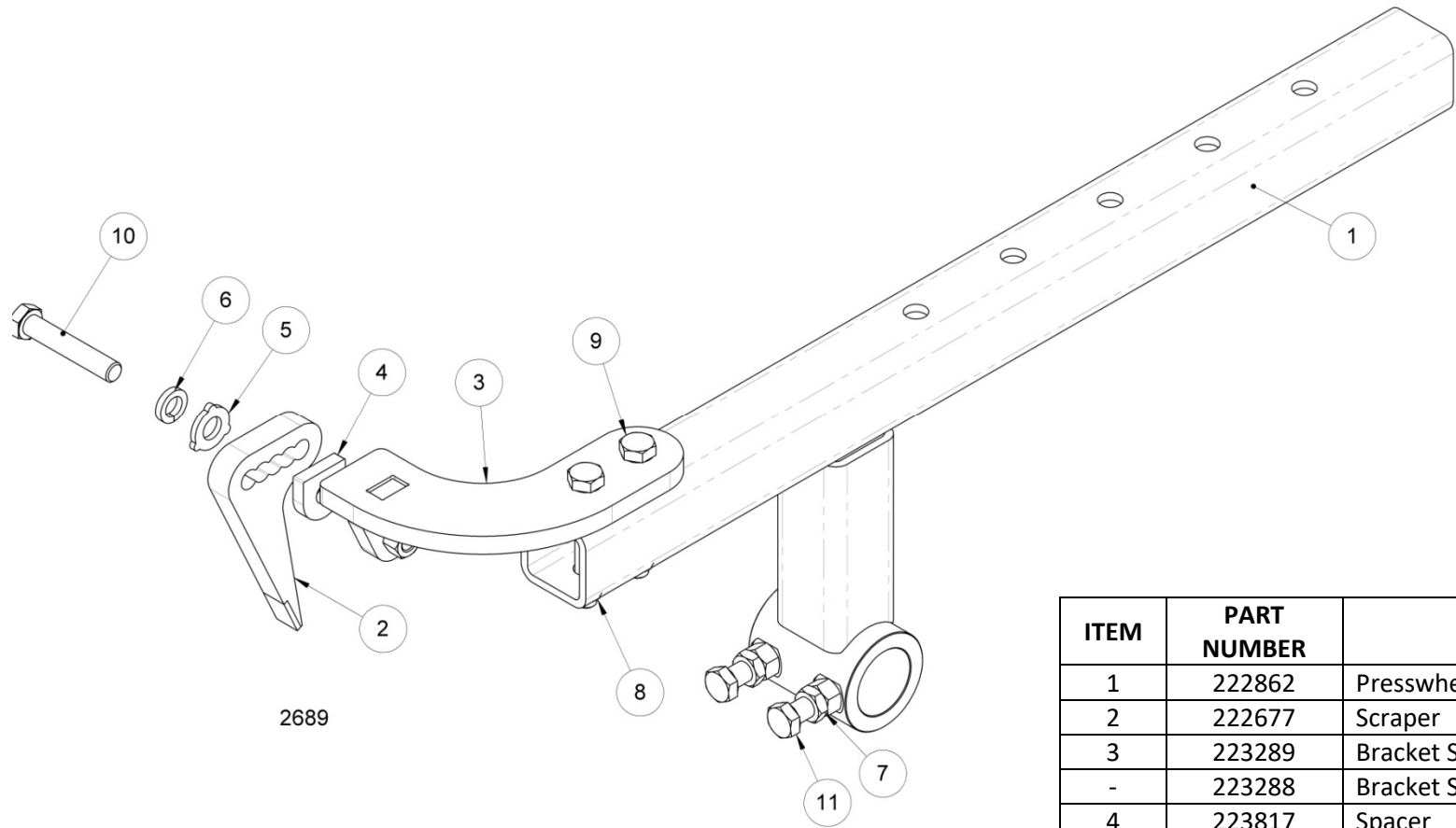
ITEM	PART NUMBER	DESCRIPTION	QTY.
1	207167	Lynch Pin 4.5DIA	1
2	216927	Spacer S/S 25 x 12 x 8	1
3	222481	Row Unit – Stocked – Refer Page 2	1
4	222486	Mount Lower	2
5	222535	Washer Recessed 1"	1
6	222539	Pin 1" x 214mm	1
7	913707	Bolt M20 x 140	4
8	222640	Presswheel Upper RH (Shown) – Refer Page 5	1
-	222639	Presswheel Upper LH (Not Shown) – Refer Page 5	A/R
9	222646	Pin $\varnothing 20$	1
10	223226	Pin $\varnothing 16$ Shank	3
11	223807	Drawbar Pin 1" x 8 – 1/4" GR8	1
12	903202	Nyloc Nut M6	1
13	903931	Nyloc Nut M20	4
14	907416	Structural Washer M20	4
15	907503	Washer Flat M12 x 24 x 1.6	2
16	908604	Spring Washer 1/2" x 5/32 x 5/32	1
17	913214	Bolt M6 x 50	1
18	913608	Bolt M12 x 30	1
19	913612	Bolt M12 x 40	1
20	913620	Bolt M12 x 85	1

**SPRING ROD ASSEMBLY (LEFT CONFIGURATION SHOWN GPN222639)**



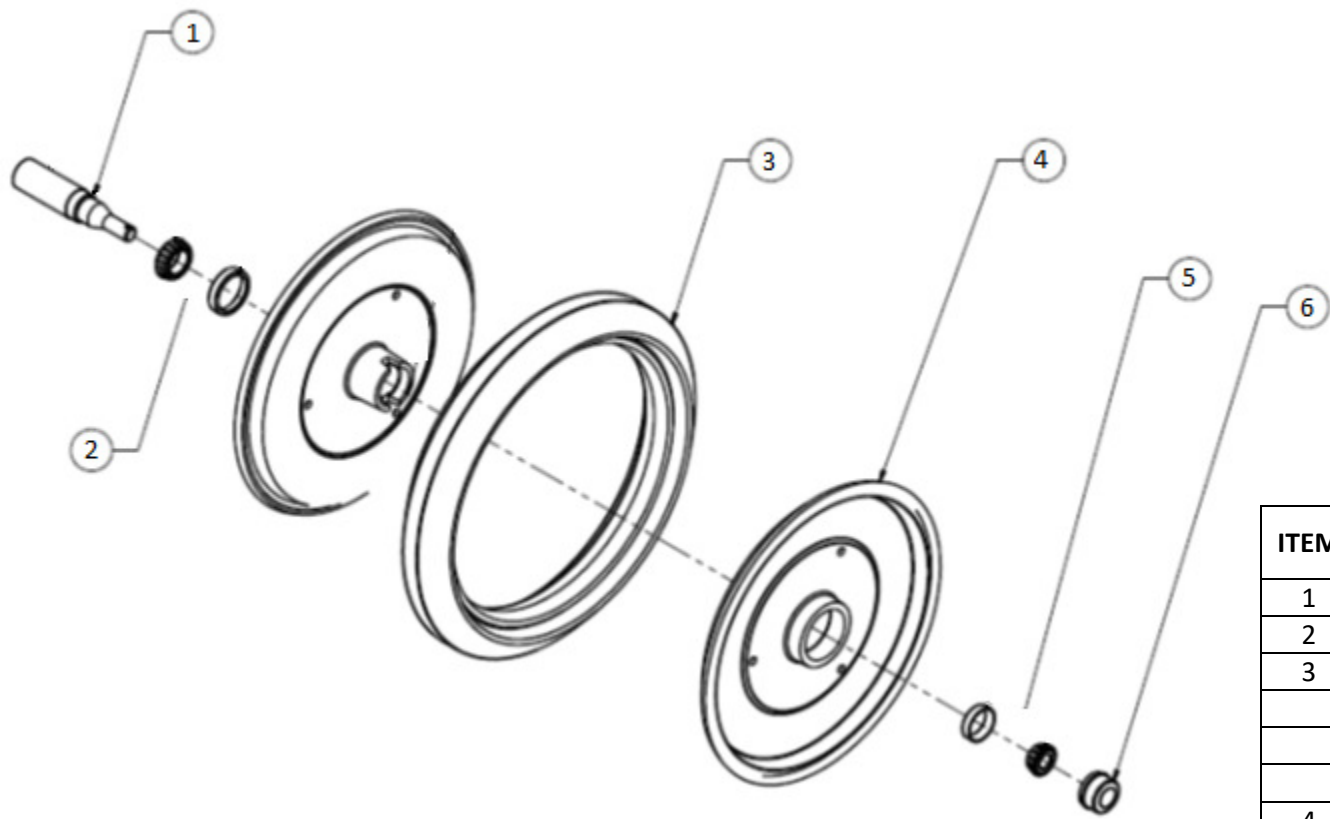
ITEM	PART NUMBER	DESCRIPTION	QTY.
1	222631	Spring Rod Assembly Inc. 2 902901 M24 Nuts	1
2	222634	Spring Seat	1
3	222635	Pivot Bracket Assy. Inc. Bushes	1
	222484	DU Bush 16DU24 for Item #3	2
4	222638	Upper Arm Presswheel	1
5	222648	Spring Para-Maxx	1
6	904600	Nut Nyloc M12	2
7	904900	Nut Nyloc M24	1
8	907405	Washer M24 Structural	2
9	907503	Washer Flat M12 x 24 x 1.6	4
10	913631	Bolt M12 x 100	2

PRESSWHEEL ASSEMBLY (GPN: 222857 LH SHOWN, 222858 RH)



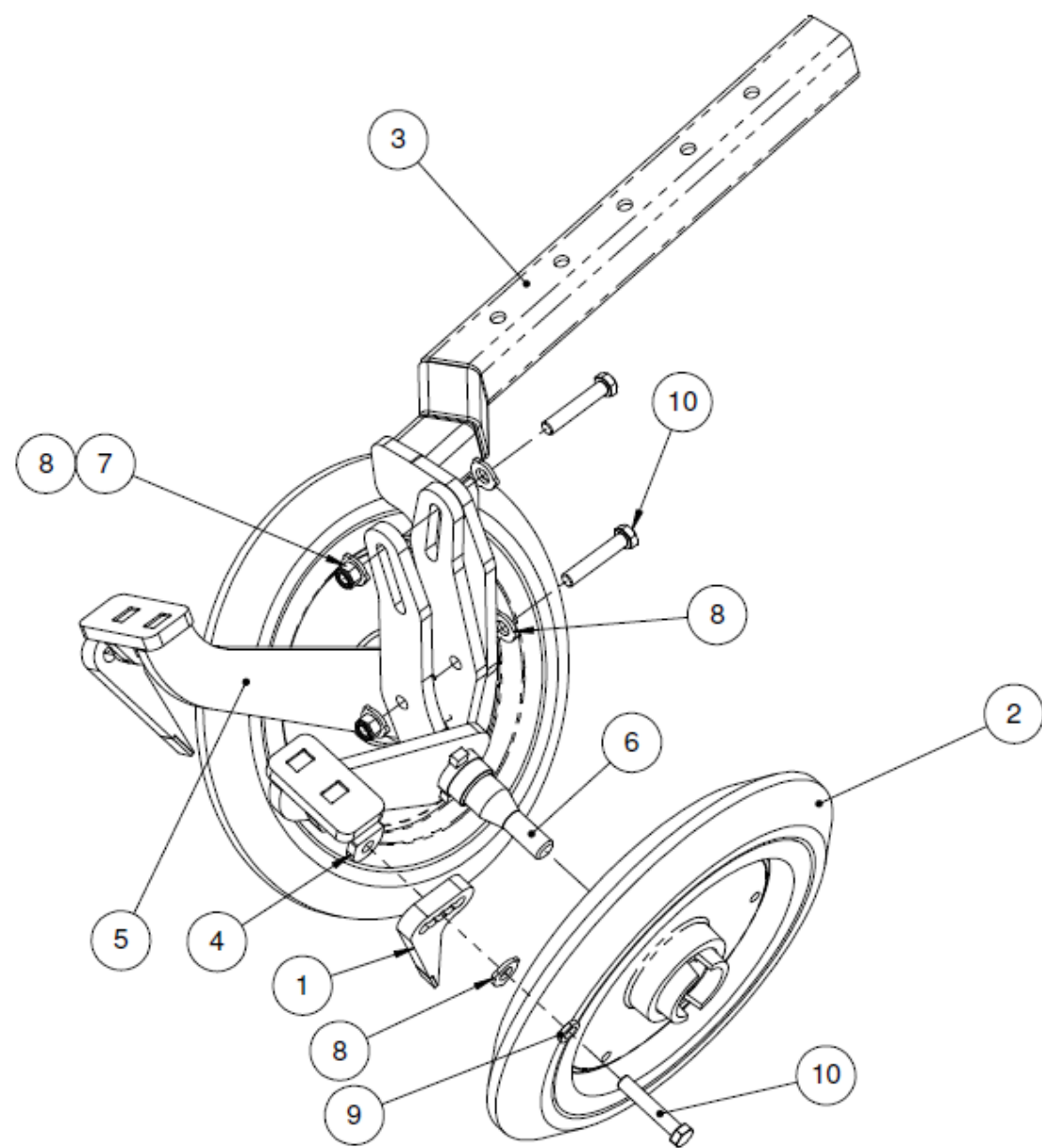
ITEM	PART NUMBER	DESCRIPTION	QTY.
1	222862	Presswheel Arm Tine 18"	1
2	222677	Scraper	1
3	223289	Bracket Scraper Mount LH	1
-	223288	Bracket Scraper Mount RH	REF
4	223817	Spacer	1
5	906602	Washer Structural ½"	1
6	908604	Washer Spring ½"	1
7	902205	Nut Lock M12	2
8	904600	Nut Nyloc M12	2
9	913619	Bolt M12 x 80 x 1.75	2
10	913630	Bolt M12 x 65	1
11	917605	Screw Set M12 x 40	2

18” PRESS WHEEL ASSEMBLY



ITEM	PART NUMBER	DESCRIPTION	QTY.
1	223271	40mm Round Axle	1
2	222512	Bearing Cup & Cone	1
3	223255	Presswheel 80 Wedge Solid	A/R
	223256	Presswheel 100 Flat Solid	A/R
	223257	Presswheel 100 Round Solid	A/R
	223258	Presswheel 80 Wedge Semi Solid	A/R
4	223265	Rim 18" (2PCE & Cups)	1
5	214819	Bearing Cup & Cone	1
6	223274	Dustcap & Retaining Clips	1
Ref	228160	Seal (Requires 228161 to set)	1
Ref	228161	Tooling for 228160	A/R
Ref	907408	Washer Flat 21 x 37 x 2	1
Ref	930100	Split Pin 5/32 x 1 – 1/2"	1
Ref	934801	Nut Slotted 3/4" UNF	1

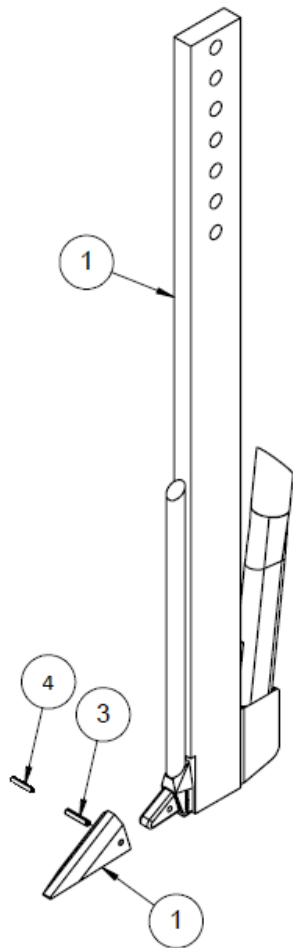
DOUBLE VEE 15" ARM (GPN: 223813 LH SHOWN, 223814 RH)



ITEM	PART NUMBER	DESCRIPTION	QTY.
1	222677	Scraper	2
2	223812	15" Presswheel Assy. 55mm Wedge Solid	2
3	223815	15" Presswheel Arm Left Hand	1
	223816	15" Presswheel Arm Right Hand	-
4	223817	Spacer	2
5	223838	Arm Axle Left Hand	1
6	223839	Arm Axle Right Hand	1
	907408	Washer 21 x 37 x 2.0 (Not shown)	2
	934801	Nut Slotted ¾" (Not shown)	2
	930100	Pin Split 5/32 x 1-1/2" (Not Shown)	2
7	904600	Nut Nyloc M12	2
8	906602	Washer Structural ½"	6
9	908604	Washer Spring ½"	2
10	913630	Bolt M12 x 65	4

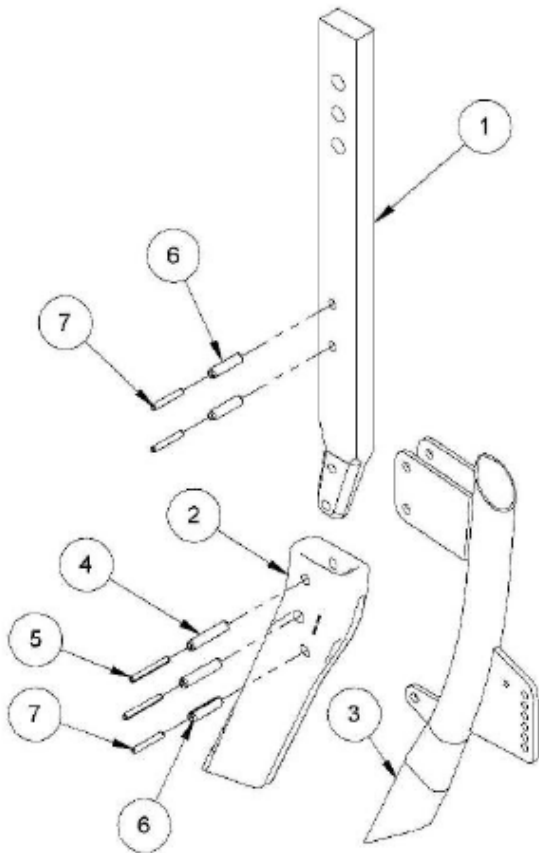
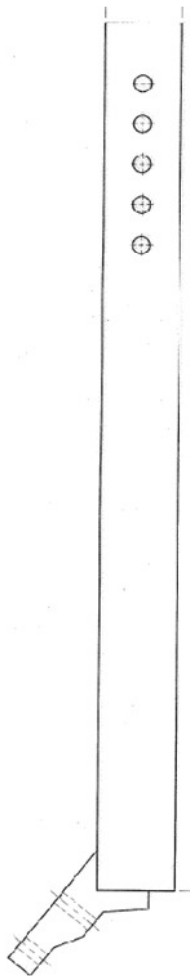


SHANK OPTIONS



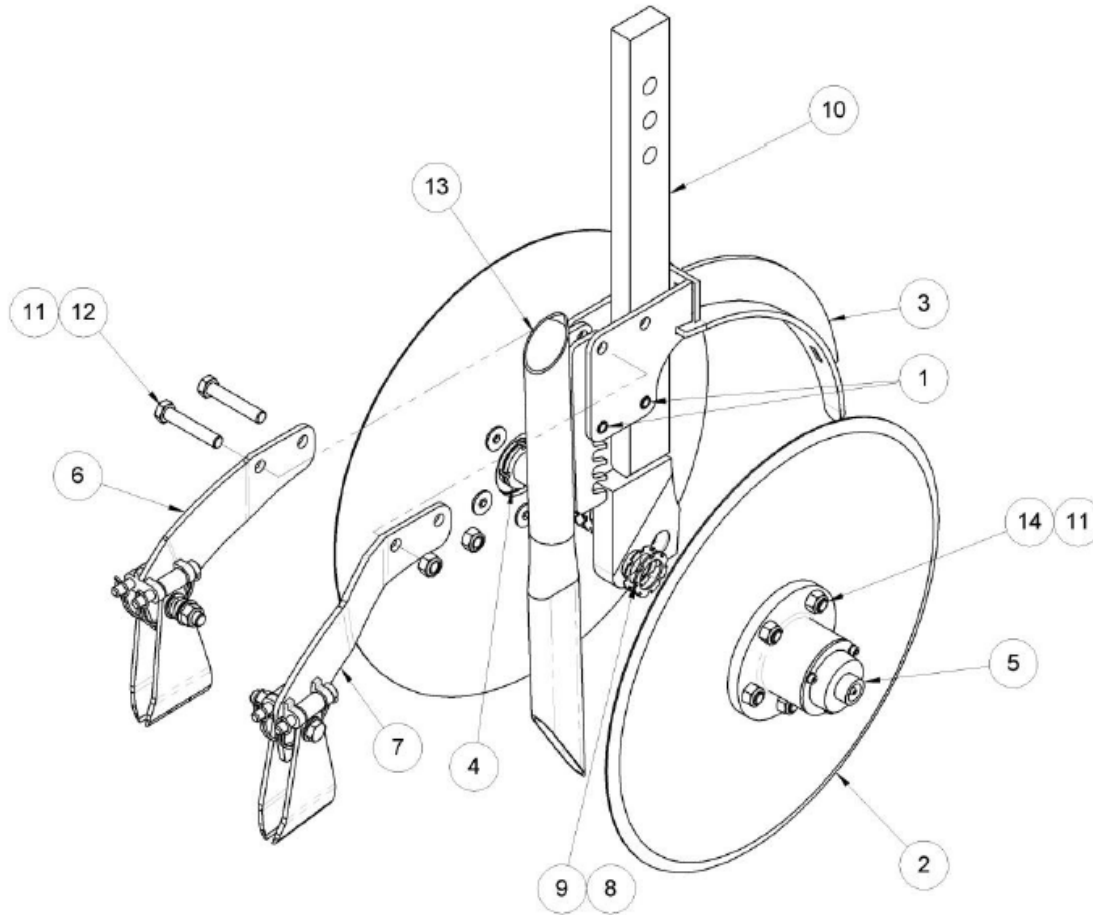
ITEM	PART NUMBER	DESCRIPTION	QTY.
	222564	Male Adaptor Spearpoint Inc. Point	
1	222565	Shank 75mm x 25mm	1
2	222568	Point – Para-maxx	1
3	228044	Pin Roll ¼" x 1- ¼"	1
4	228045	Pin Roll 5/32" x 1- ¼"	1

ITEM	PART NUMBER	DESCRIPTION	QTY.
	223841	Shank 51° No Point & S/Boot	



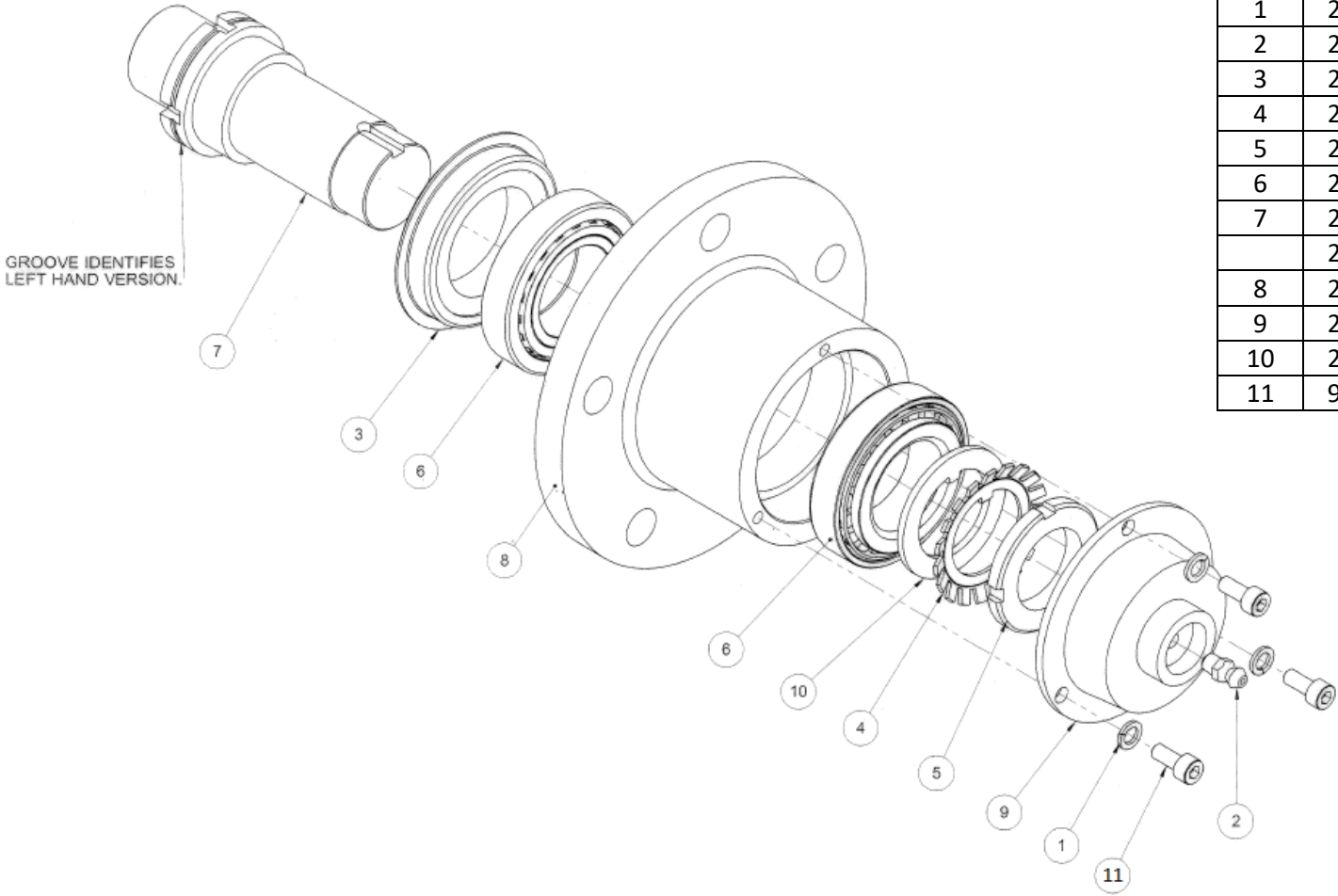
ITEM	PART NUMBER	DESCRIPTION	QTY.
	223824	Gason Knifepoint Inc. Point & S/Boot	
1	223825	Shank Notill	1
2	223827	Knifepoint	1
3	223828	Knifepoint Sowing Boot	1
4	216484	Pin Roll 10 x 50	2
5	216485	Pin Roll 6 x 50	2
6	216509	Pin Roll 10 x 40	3
7	216510	Pin Roll 6 x 40	3

## DOUBLE DISC OPENER ASSEMBLY (GPN: 223771 LH SHOWN, 223772 RH)



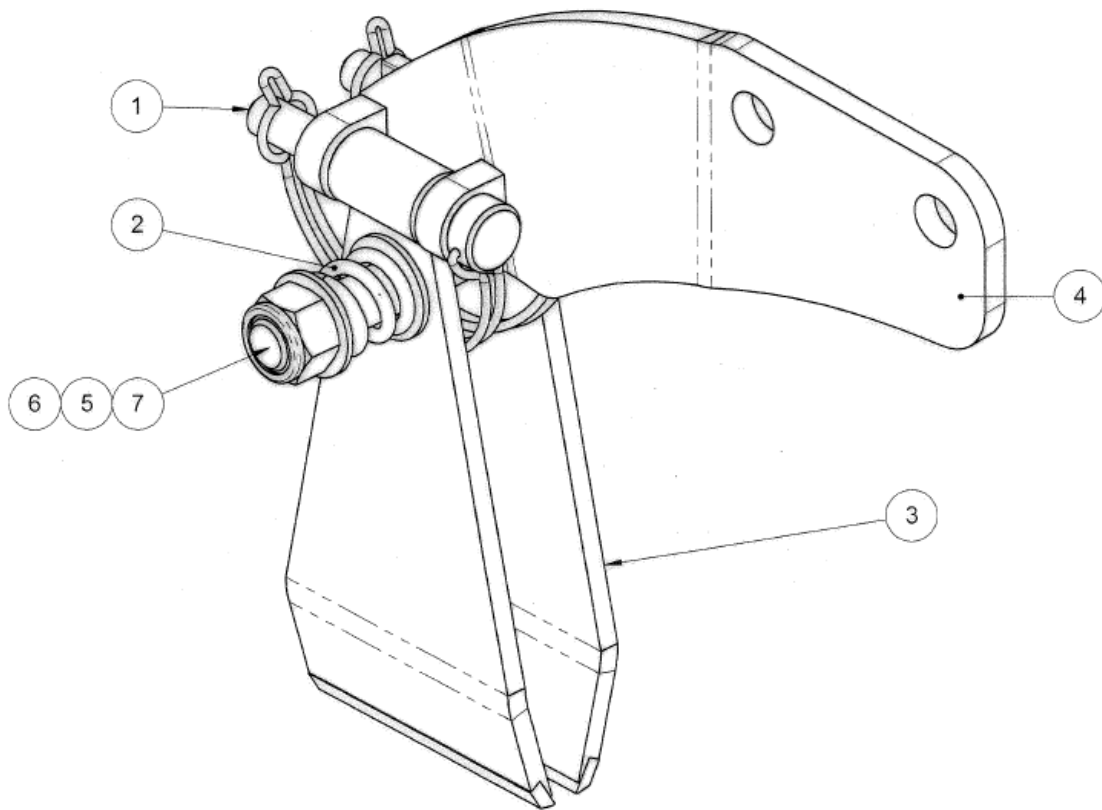
ITEM	PART NUMBER	DESCRIPTION	QTY.
1	223806	Roll Pin $\varnothing 12 \times 40$	2
2	223773	Single Bevel Disc 18" x 6mm	2
3	223779	Guard	1
4	223780	Hub Assembly DDO Left – Refer Page 11	1
5	223782	Hub Assembly DDO Right – Refer Page 11	1
6	223793	Scraper Assembly LH LHL – Refer Page 12	1
	223794	Scraper Assembly LH RHL – Refer Page 12	-
7	223795	Scraper Assembly RH LHL – Refer Page 12	1
	223796	Scraper Assembly RH RHL – Refer Page 12	-
8	223802	Shim DDO 1.2mm	4
9	223803	Shim DDO 2mm	4
10	223774	Shank Assembly DDO Left	1
	223775	Shank Assembly DDO Right	-
11	904600	Nut Nyloc M12 CL10	12
12	913630	Bolt M12 x 65	2
13	228788	Sowing Boot DDO	1
14	917616	Screw Set M12 x 35 CSK	10

DDO HUB ASSEMBLY (GPN: 223780 LH SHOWN, 223782 RH)



ITEM	PART NUMBER	DESCRIPTION	QTY.
1	209988	Washer Spring M5	3
2	210775	Grease Nipple M6 Straight	1
3	222508	Seal Marine 1- 1/2"	1
4	222510	30mm Lock Washer	1
5	222511	30mm Lock Ring	1
6	222512	Bearing Set	2
7	223781	Axle DDO Left	1
	223783	Axle DDO Right	-
8	223784	Hub DDO	1
9	223785	Grease Cap	1
10	223786	Washer	1
11	922301	Screw Cap M5 x 12	3

SCRAPER ASSEMBLY (LEFT HAND, LEADING HAND LEFT, SHOWN)

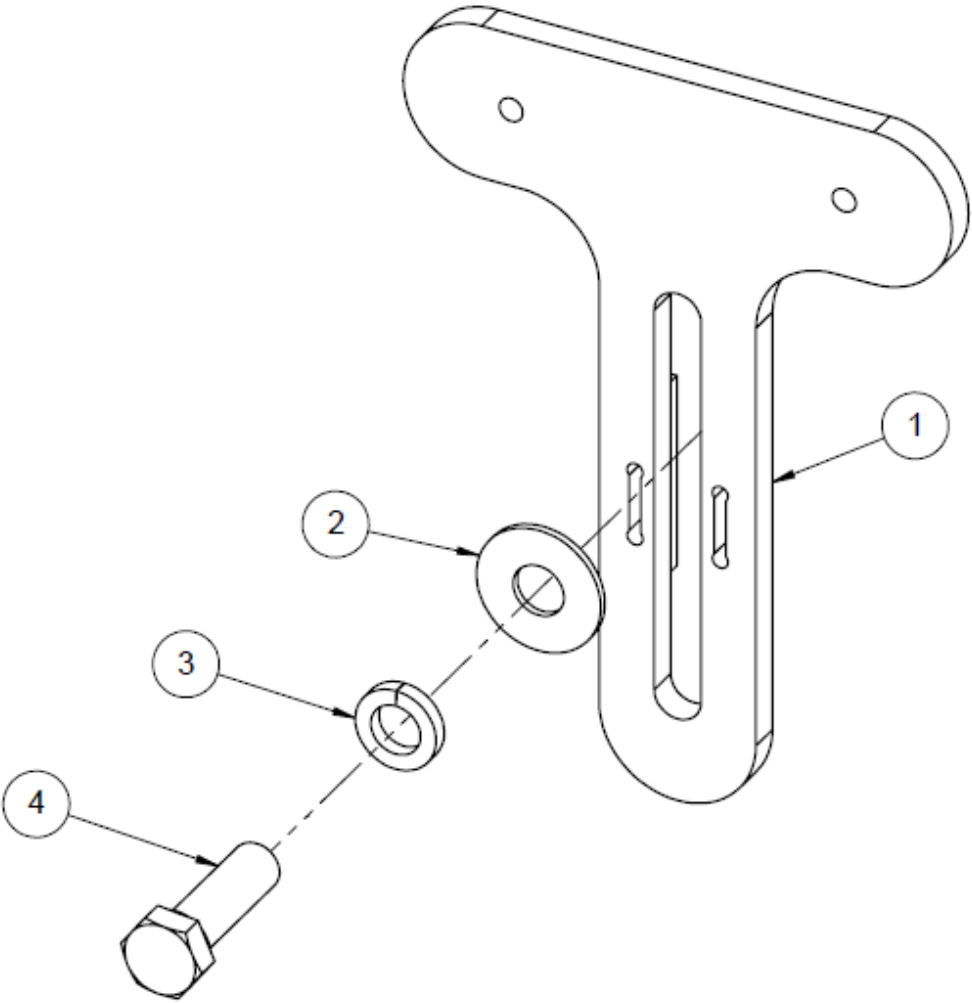


ITEM	PART NUMBER	DESCRIPTION	QTY.
1	204994	Pin Shaft Locking $\varnothing 9.5$	2
2	223788	Spring Para-Maxx	1
3	223789	Mud Scraper DDO	2
4	223797	Scraper Mount LH LHL	1
	223799	Scraper Mount RH LHL	-
	223798	Scraper Mount LH RHL	-
	223800	Scraper Mount RH RHL	-
5	904600	Nut M12 Conelock	1
6	907503	Washer Flat M12 x 24 x 1.6	3
7	913626	Bolt M12 x 70	1

NOTE: Fit nut loosely.  
Tighten when  
assembled to disc  
assembly.

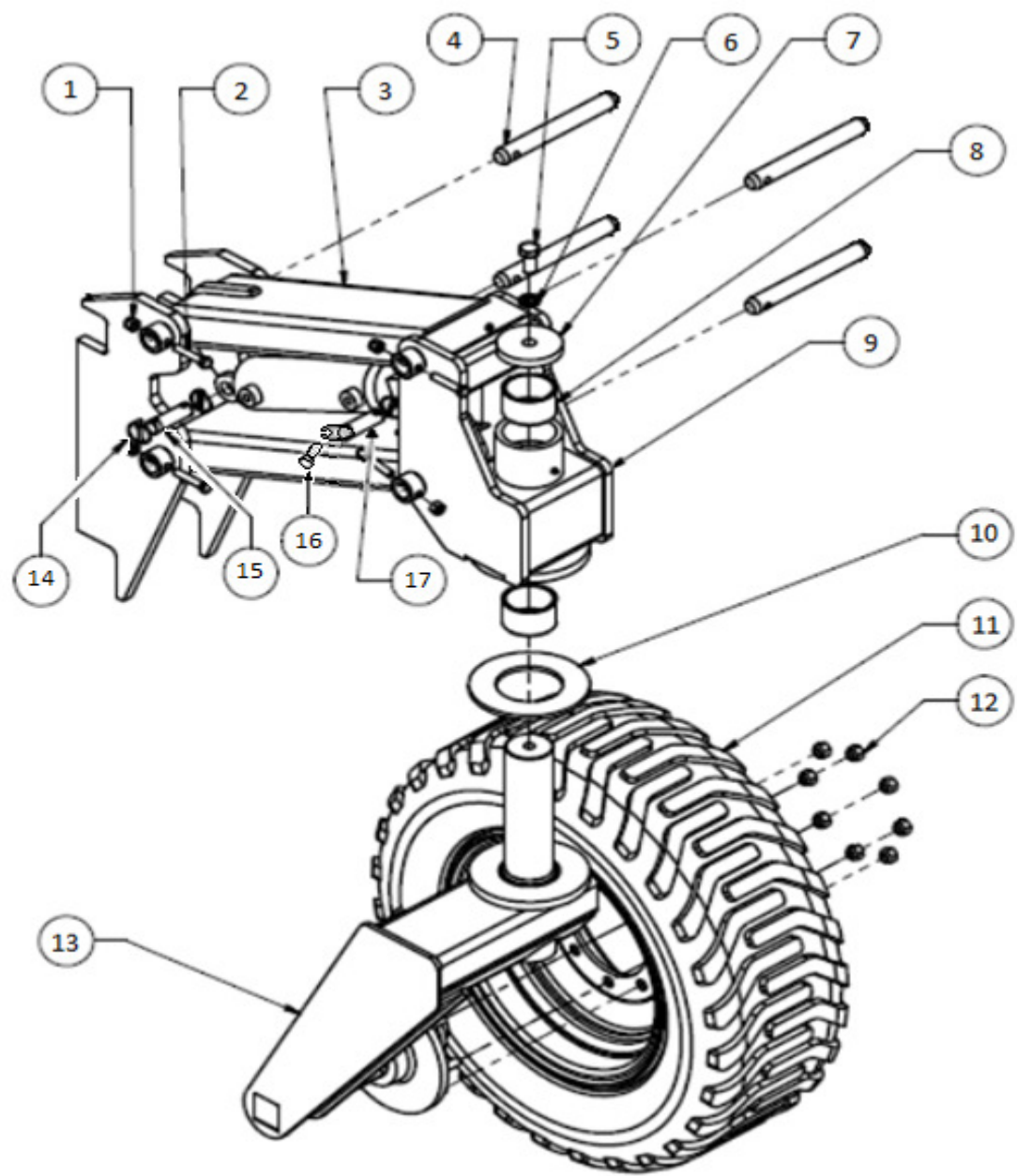


D-CUP KIT OPTION (GPN: 228488)



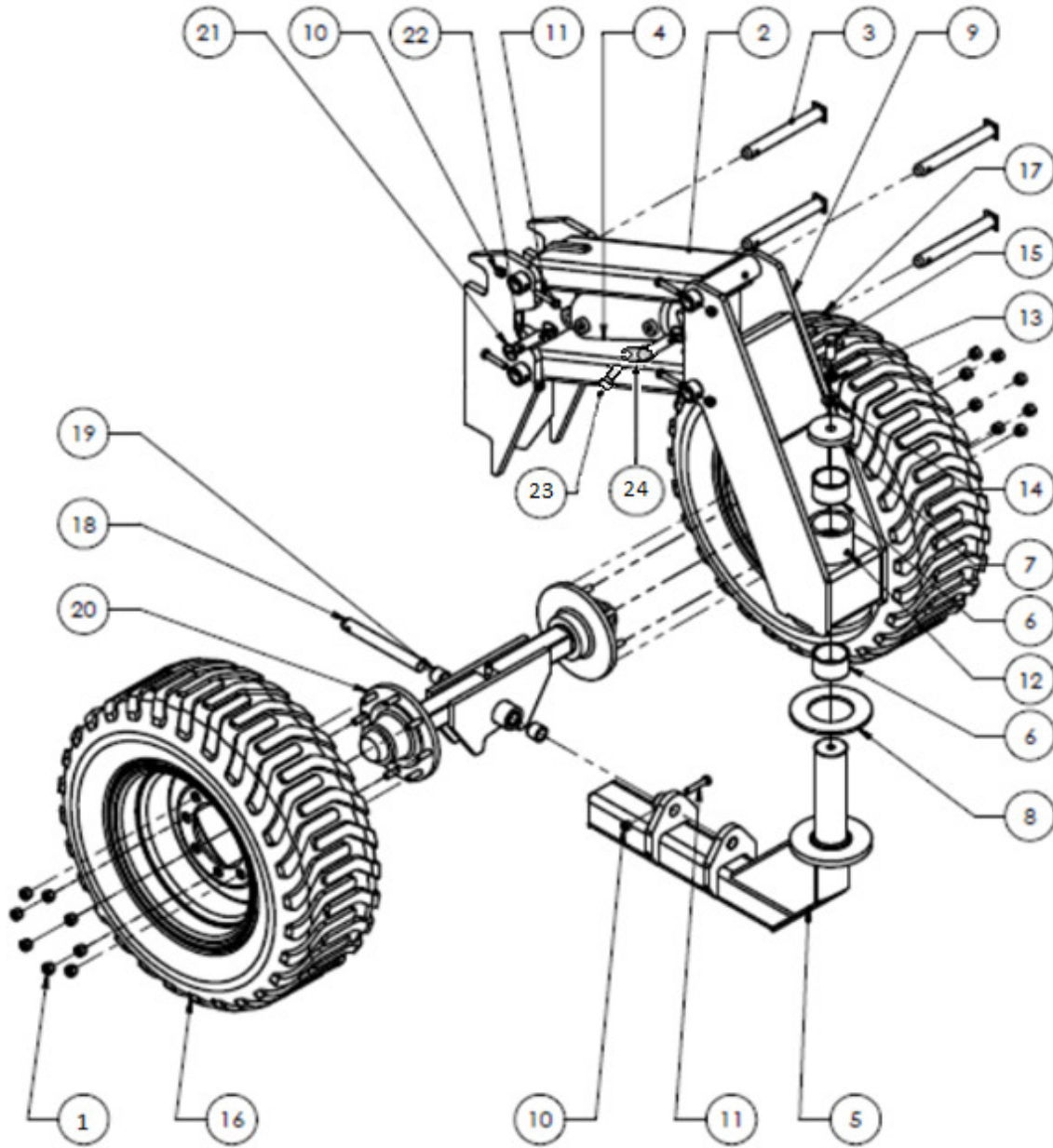
ITEM	PART NUMBER	DESCRIPTION	QTY.
1	228487	D-Cup Bracket	1
2	906601	Washer Flat ½" x 1- ¼" x 16G	1
3	908601	Washer Spring ½ x 5⁄₃₂ x 3⁄₃₂	1
4	917603	Screw Set M12 x 40	1

FRONT SINGLE CASTER WHEEL ASSEMBLY



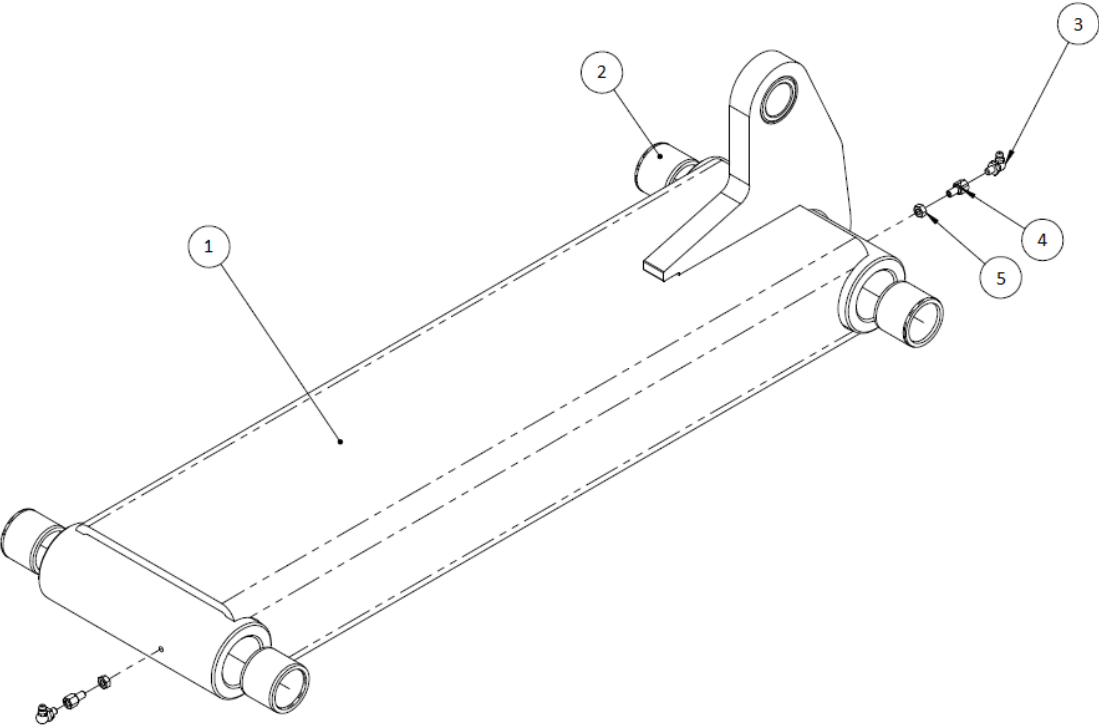
ITEM	PART NUMBER	DESCRIPTION	QTY.
1	904702	Nut Nyloc M16	4
2	913730	Bolt M16 x 85	4
3	222674	Arm Assembly Parallel Inc. Bushes – Refer Page 16	2
4	222886	Pin Ø38.1 x 372mm	4
5	917809	Screw Set M24 x 75	1
6	907405	Washer Flat Structural M24	1
	909801	Washer Spring M24 (Not shown)	1
7	222672	Top Washer	1
8	222676	Bush	2
9	222916	Castor Pivot Head	1
	210775	Grease Nipple M6 (Not shown)	1
10	222673	Thrust Washer, Polyethylene 10mm	1
11	217844	Wheel Assy. 400/60-22.5 LH (Shown)	1
	217843	Wheel Assy. 400/60-22.5 RH (Not shown)	-
12	204622	Nut Wheel M18 x 1.5	8
13	222921	Castor Left Shown (Shown)	1
	222922	Castor Right Not Shown (Not Shown)	-
14	232995	Hair Pin Suits 1.25"	2
15	232994	Pin Clevis 1.25"	1
16	232996	Bolt M8 Shoulder	1
17	232993	Pin Clevis 1.25"	1

## FRONT DUAL CASTER WHEEL ASSEMBLY



ITEM	PART NUMBER	DESCRIPTION	QTY.
1	204622	Nut Wheel M18 x 1.5	16
2	222674	Arm Assembly Parallel Inc. Bushes – Refer Page 16	2
3	222886	Pin Ø38.1 x 372mm	4
4	222651	5"x12" Cylinder	1
5	223236	Castor Dual	1
6	222676	Bush	2
7	222672	Top Washer	1
8	222673	Thrust Washer	1
9	223234	Castor Upper with Bushes	1
10	904702	Nut Nyloc M16	5
11	913730	Bolt M16 x 85	5
12	210775	Grease Nipple M6	1
13	909801	Washer Spring M24	1
14	907405	Washer Flat Structural M24	1
15	917809	Screw Set M24 x 75	1
16	217843	RH Wheel Assy. 400/60-22.5	1
17	217844	LH Wheel Assy. 400/60-22.5	1
18	223847	Pin Ø38.1 x 328mm	1
19	222661	Bush Ø47.7 x 38.4 x 40	2
20	223237	Dual Axle with Bushes	1
21	232995	Hair Pin	2
22	232994	Pin Clevis 1.25"	1
23	232996	Bolt M8 Shoulder	1
24	232993	Pin Clevis 1.25"	1

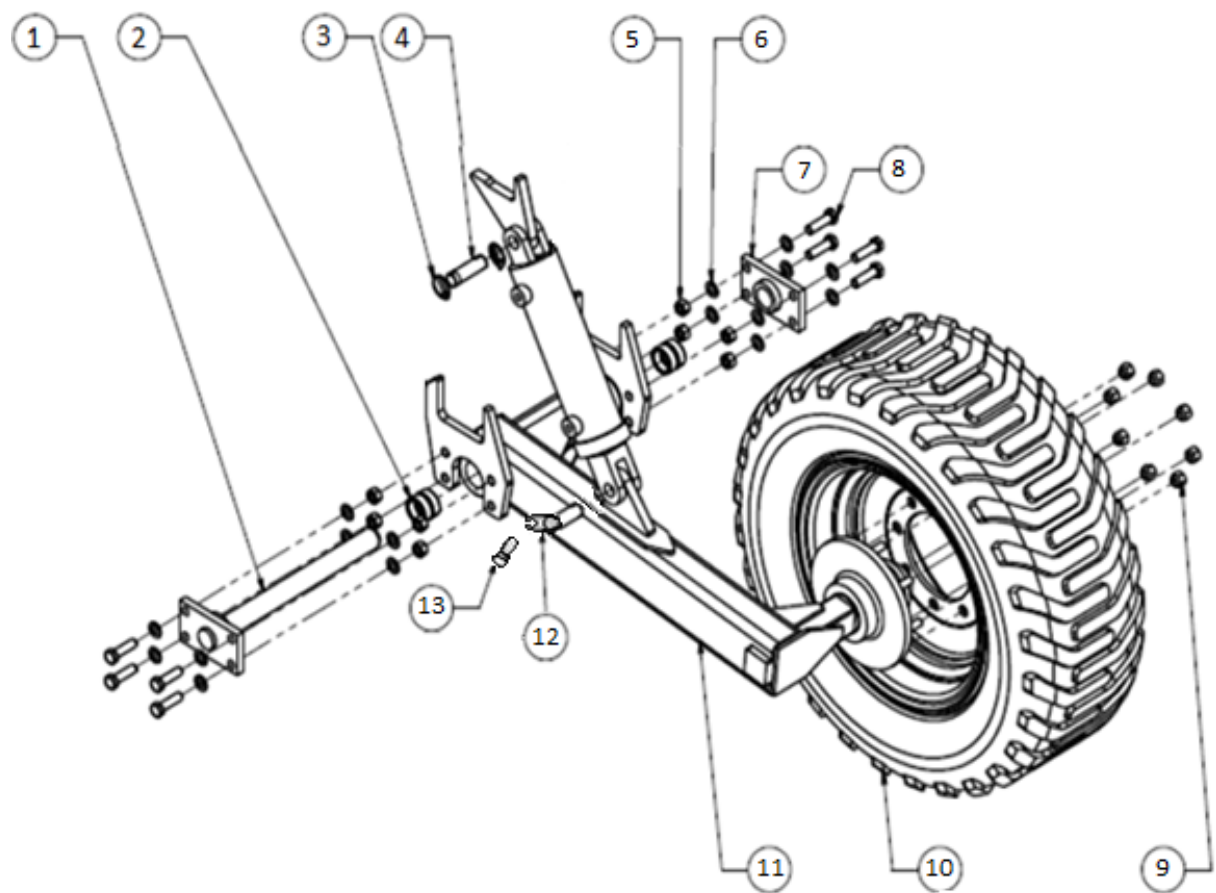
ARM ASSEMBLY PARALLEL (GPN: 222674)



ITEM	PART NUMBER	DESCRIPTION	QTY.
1	222675	Arm Parallel	1
2	222661	Bush 47.7 x 38.4 x 40	4
3	209338	Grease Nipple M6 90°	2
4	231809	Adaptor – M6 Grease Nipple	2
5	902201	Nut M6	2

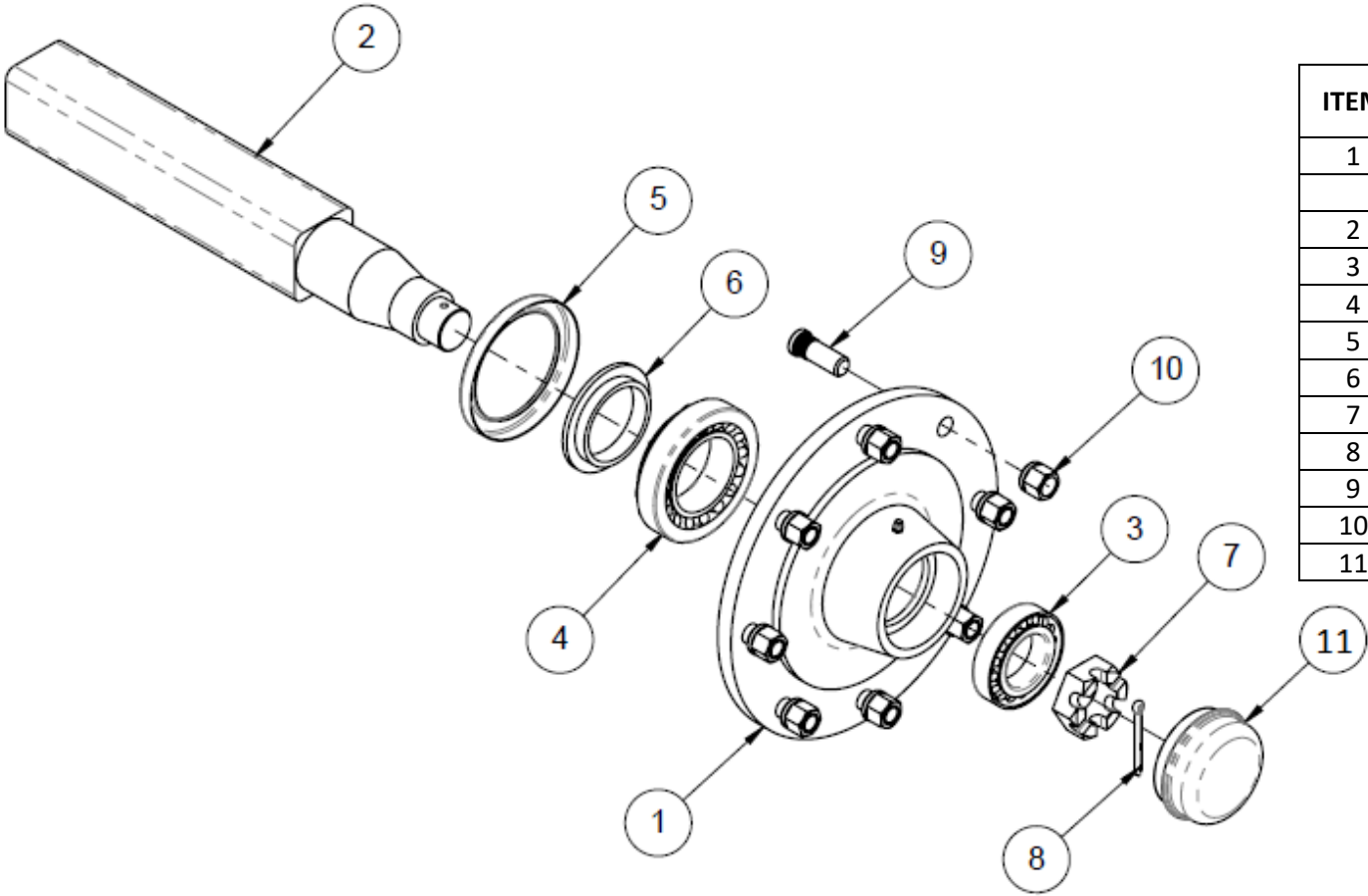


REAR WHEEL ASSEMBLY



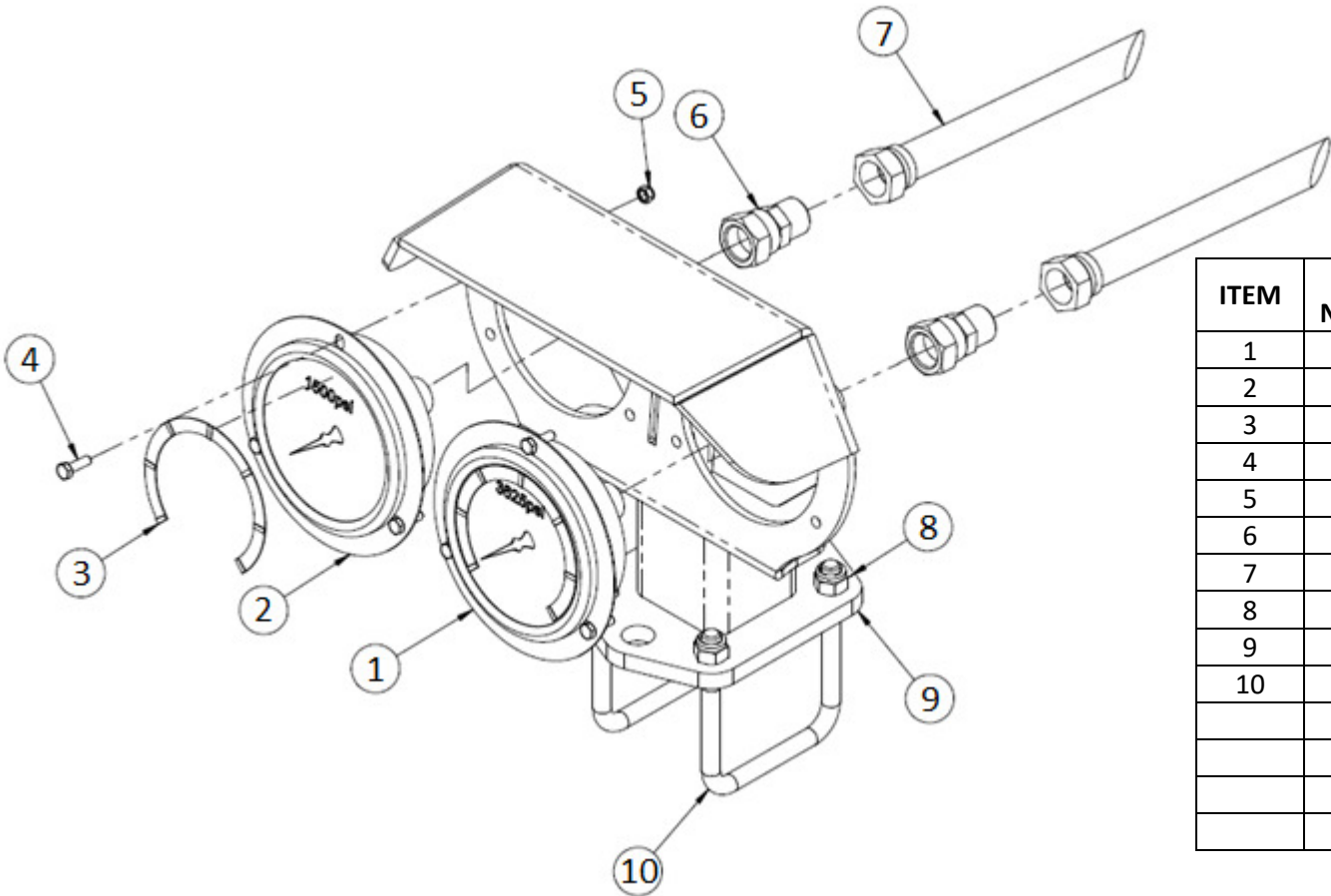
ITEM	PART NUMBER	DESCRIPTION	QTY.
1	222875	Pin Pivot Rear Wheel Arm	1
2	222663	Bush	2
3	232995	Hair Pin	2
4	232994	Pin Clevis 1.25"	1
5	904802	Nut Nyloc M20	8
6	907416	Washer Flat Structural M20	16
7	222876	Support Pin Pivot	1
8	917807	Screw Set M20 x 70 x 2.5	8
9	204622	Nut Wheel M18 X 1.5	8
10	217843	Wheel Assy. 400/60-22.5 RH (Shown)	1
	217844	Wheel Assy. 400/60-22.5 LH (Not Shown)	-
11	223845	Crank Arm RH Shown	1
	223843	Crank Arm LH Not Shown	-
	209338	Grease Nipple M6 90° (Not Shown)	2
12	232993	Pin Clevis 1.25"	1
13	232996	Bolt M8 Shoulder	1

70H-8 HUB AND STUB DETAILS



ITEM	PART NUMBER	DESCRIPTION	QTY.
1	230092	Hub FAD 70H-8	1
	230090	Hub Kit (Items 1, 3-11)	REF
2	230091	Stub Axle-Square 70mm	1
3	204615	Outer Bearing 32210	1
4	204616	Inner Bearing Outer 32213	1
5	204617	Seal Bearing – Suits 1810	1
6	204623	Seal Ring Suit 678013	1
7	215312	Nut Slotted M39 x 2	1
8	215313	Pin Split M6 x 60	1
9	204621	Stud Wheel	8
10	204622	Wheel Nut M18 x 40 x 1.5	8
11	204620	Dust Cap 90mm	1

GUAGE KIT (GPN223242)



ITEM	PART NUMBER	DESCRIPTION	QTY.
1	223239	Gauge 0-3625 psi	1
2	216082	Gauge 0-1500 psi	1
3	228632	Decal – Gauge Graduation	2
4	208177	Screw Set M5 x 15	6
5	903200	Nut Nyloc M5	6
6	223277	Gauge Adaptor ½" G x ½" BSPTM	2
7	223240	Hose ¾" 1200mm	2
8	903406	Nut Nyloc M10	4
9	223241	Bracket	1
10	222312	U Bolt M10 76x76	2
	812204	U Bolt M16 100x100 (Not Shown)	1
	903930	Nut Nyloc M16 (Not Shown)	2
	217564	TEE. 7/8 x 7/8 x ¾ JICMFM (Not Shown)	2
	225970	NIP. ¼ BSPPM x ¾ JICM (Not Shown)	2

## WING LIFT DETAILS

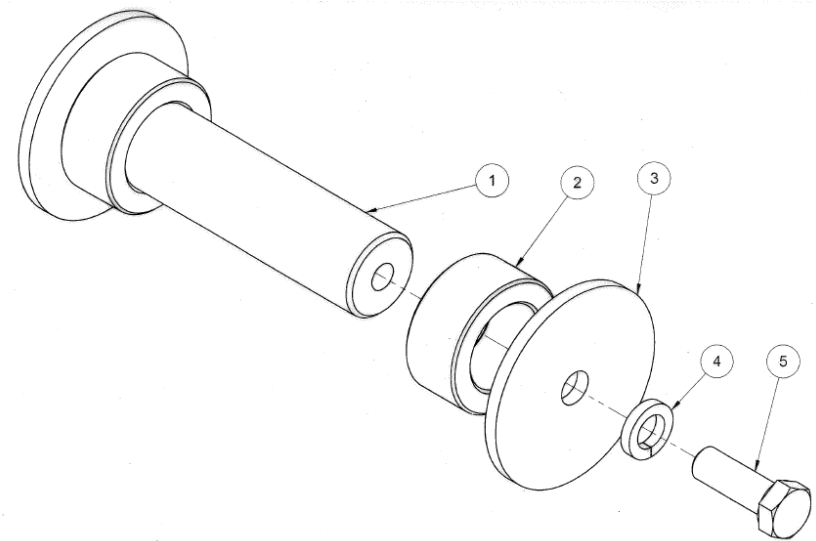
### 12m Series

ITEM	PART NUMBER	DESCRIPTION	QTY.
1	222656	Cylinder 4.50" x 762	4
	233347	Seal Kit Suits 222656	-
2	222504	Flow Divider 2 Way	1
	223002	Seal Kit Suits 222504	-
3	212699	Valve Ball 2 Way	2
-	-	Hoses and fittings as appropriate.	-

### 18m Series

ITEM	PART NUMBER	DESCRIPTION	QTY.
1	222658	Cylinder 4.00" x 610	4
	233349	Seal Kit Suits 222658	-
2	222657	Cylinder 5.00" x 1067	4
	233348	Seal Kit Suits 222657	-
3	222504	Flow Divider 2 Way	1
	223002	Seal Kit Suits 222504	-
4	212699	Valve Ball 2 Way	2
-	-	Hoses and fittings as appropriate.	-

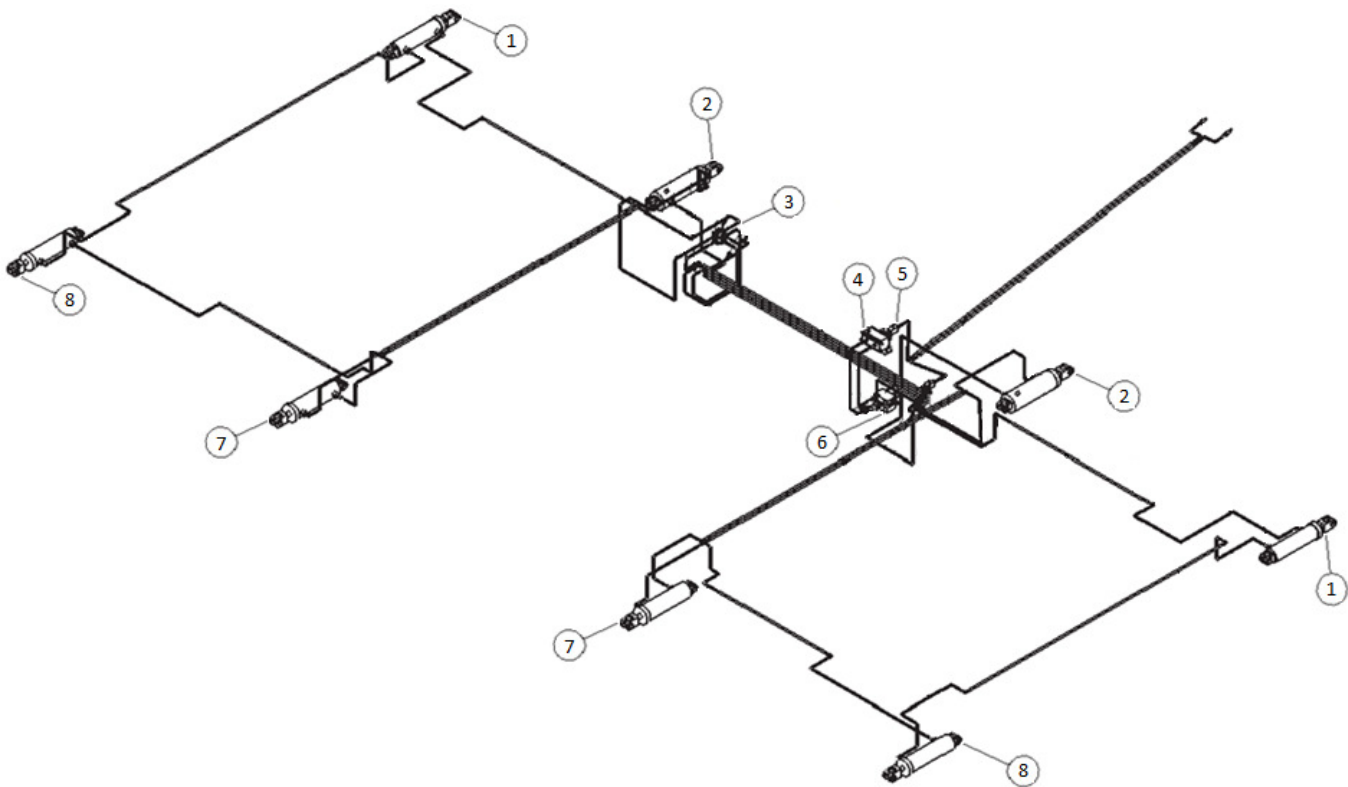
## PIN ASSEMBLY WINGLIFT (GPN223228)



ITEM	PART NUMBER	DESCRIPTION	QTY.
1	223229	Pin Wing Lift	1
2	223230	Roller Wing Lift	2
3	223231	Washer Wing Lift	2
4	908604	Washer Spring 1/2"	2
5	917608	Screw Set M12 x 35 x 1.75	2

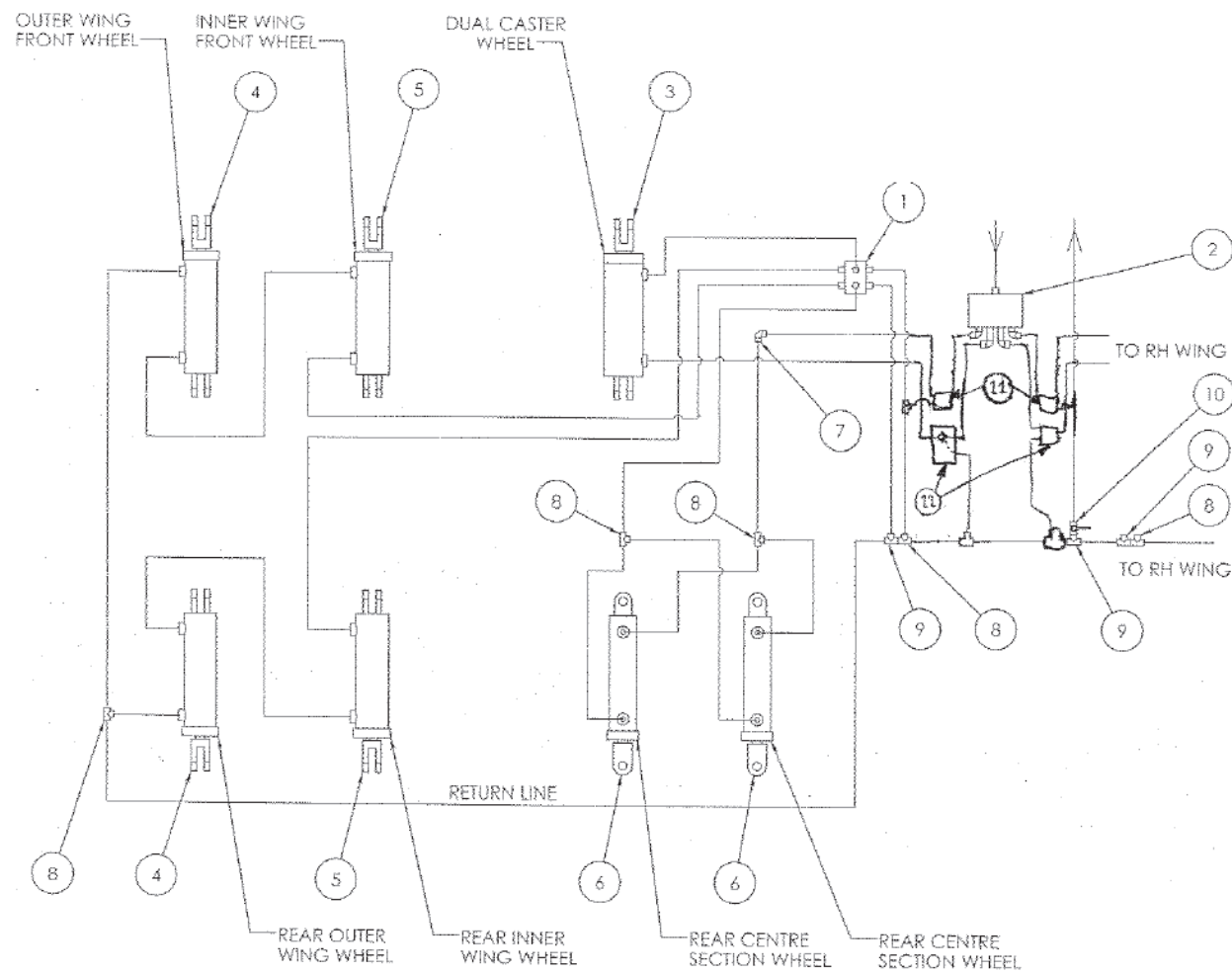


12m SINGLE FOLD – DEPTH CONTROL CIRCUIT



ITEM	PART NUMBER	DESCRIPTION	QTY.
1	222654	Cylinder 4" x 12"	2
	225946	Seal Kit Suits 222654	-
2	222651	Cylinder 5" x 12"	2
	228775	Seal Kit Suits 222651	-
3	222879	Valve 6 Way	1
4	222504	Flow Divider	1
	223002	Seal Kit Suits 222504	-
5	212699	Valve Ball 2 Way	2
6	225684	Valve Over Centre	2
7	222652	Cylinder 4 ½" x 12"	2
	225948	Seal Kit Suits 222652	-
8	222653	Cylinder 4 ¼" x 12"	2
	225947	Seal Kit Suits 222653	-

18m DOUBLE FOLD – DEPTH CONTROL CIRCUIT (LH SIDE)



ITEM	PART NUMBER	DESCRIPTION	QTY.
1	222879	Valve 6 Way	1
2	222505	Flow Divider 4 Way	1
	222852	Mount Flow Divider 4 Way (Not shown)	1
3	222651	Cylinder 5" x 12"	1
	228775	Seal Kit Suits 222651	-
4	222653	Cylinder 4 ¼" x 12"	2
	225947	Seal Kit Suits 222653	-
5	222652	Cylinder 4 ½" x 12"	2
	225948	Seal Kit Suits 222652	-
6	222655	Cylinder 3 ½" x 12"	2
	223164	Seal Kit Suits 222655	-
7	223205	ELB. 7/8 JICMM	1
8	223209	TEE. 7/8 JICMFM	6
9	223204	ELB. 7/8 JICMF	3
10	212699	Valve 2 Way Ball ½ BSPP	1
11	225684	Valve Over Centre	2

LH SIDE SHOWN  
RH SIDE MIRRORED

## MISCELLANEOUS PARTS

[illegible]

***END***